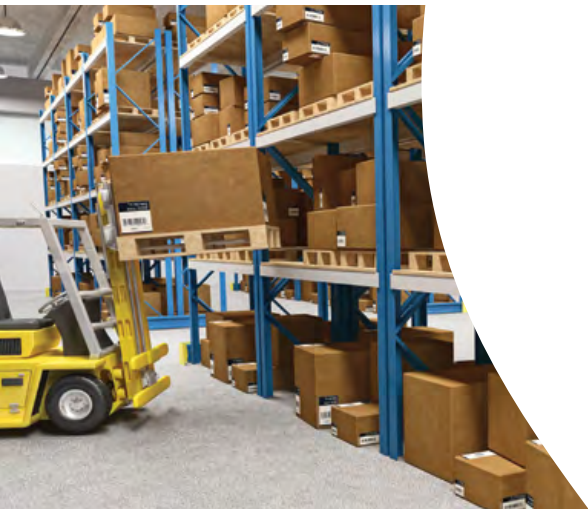




Fire Detection Product Catalogue

Issue 3: 2015/16



FireClass is a revolutionary new class of commercial fire detection products.

FireClass consists of a comprehensive range of fully approved quality products designed and manufactured in Europe.

FireClass is designed to appeal to both the end user and installer with the latest fire detection technology packaged in an easy to install, out-of-the-box, digital open-protocol solution.

A new class of fire detection designed to meet all of your needs from a single supplier.

Introducing a new class
of fire detection



Comprehensive Range

FireClass provides a broad range of detection solutions. FireClass conventional fire detection products range from the low cost J408-2 2 zone panel to the expandable 24 zone J424 panel.

These are complemented by an enviable range of conventional fire detectors

and accessories focused on providing comprehensive protection and minimum false alarms.

FireClass addressable fire detection products range from the easily installed out-of-the-box FC501 and FC MAE software to monitor various locations via

IP to the 4 Loop. FireClass 64 and FireClass 240 networked digital protocol fire panels with optional FireClass Graphics.

FireClass Addressable uses a powerful and robust digital protocol for high reliability and flexibility in installation.



FireClass - A New Class of Fire Detection

Fully Approved

In order to ensure peace of mind for both the installer and end user, FireClass products are third party approved and certified to relevant European standards. FireClass approvals go beyond the minimum requirements including EN54 approval of the FireClass network, EN54-13 system approval, EN54 detector approval in all detection modes and the Prescient III Extinguishing Panel having EN54-2, EN54-4, EN54-13 and EN12094-1 approval.



Digital Open Protocol

FireClass provides a digital protocol solution widely available throughout the market via trade and distribution specialists ensuring freedom of choice for installers and end users.

Developed originally for the harsh marine environment FireClass uses a robust digital protocol that supports various wiring configurations to simplify installation and retrofit applications often problematic for competitors' protocols.

Easy to Install

Ease of installation and engineering underpins the concept of FireClass. It runs through all the products. For example panel installation is simplified by allowing electronics to be easily as removed for first fix, whilst simple user friendly configuration software and fault finding tools speed up commissioning.

Field device installation is simplified through the flexibility of the FireClass digital protocol and other features such as the ceiling tile adaptor that can significantly speed up detector installation.

CONTENTS

FireClass General Content

FireClass Locations	1
Why FireClass	4
FireClass Scenarios	7
FireClass a Solution Focused Approach	8
Total Solutions from Tyco	22
Tyco Security Products Introduction	24
FireClass Icon Library	26
Best in Class from FireClass	28
	30

FireClass Addressable Range

Introduction to the range	33
Panels	34
Graphics Software	37
Panels Bezel and Spares	52
Detectors	56
Detector Bases	58
Remote Indicators	62
Ceiling Tile Adapter	66
Callpoints	67
Sounder Bases	68
Sounders and Sounder / Beacon	72
Loop Modules	75
FireClass Housings	80
Ancillary Loop Modules	87
490ST Service & Programming Tool	88
	92

Air Sampling Unit and Accessories

Duct Probe Unit	94
	101

Beam Smoke Detectors

Optical Beam Smoke Detectors Mounting Accessories	103
	107

FireClass Conventional Range

Introduction to the range	109
DuoCEL	111
PreceptEN	114
Prescient III	115
Gas Extinguishing Units	117
J408	118
J424-8	120
J400 Series Accessories	121
Detectors	122
600 Series Detectors	125
Detector Bases	126
Call Points	129
Manual Call Points	135
Relay Bases	136
Sounders / Beacons	141
Door Release Units	143
Remote Indicators	149
	150

Power Supply Units and Batteries

Installation Accessories	152
Detector Test Equipment	155
	159



- 1** PO Box 61355
Block D, Floor 3
Office Park Building #56,
Dubai Internet City,
Dubai,
United Arab Emirates

Tel: +971 (0)4 883 8689
Fax: +971 (0)4 883 8674



- 4** Tyco Yangin Korunum Sistemleri
Anonim Sirketi
Ehibeyt Mahallesi, Aykon Plaza
1242, Cadde, Nox 36 Kat 2/10
06520 Balgat - Ankara
Turkey

Tel: +90 (0)312 473 7011
Fax: +971 (0)312 473 7392



- 7** Tyco Fire Protection Products
Unit 3, Thandanani Office Park
Halfway Gardens
Midrand
3610
South Africa

Tel: +27 (0)110 269 476



- 2** Tyco Fire Protection Products
Tyco Park
Grimshaw Lane
Newton Heath, Manchester
M40 2WL
United Kingdom

Tel: +44 (0)161 259 4000
Fax: +44 (0)161 875 0491



- 5** Tyco Fire Protection Products
Via Gabbiano 22
Zona Industriale S. Scolastica
64013 Corropoli (TE)
Italy

FireClassSalesIT@tycoint.com



- 8** Tyco Fire Protection Products
Kopersteden 1
P.O. Box 198, 7500 AD
Enschede
The Netherlands

Tel : +31 (0)534 284 444
Fax : +31 (0)534 283 377
verkoopNL@tyco-bspd.com



- 3** Tyco Fire Protection Products
Rua Robert Bosch, 568
Barra Funda
São Paulo / SP
01141-010
Brazil

Tel : +55 (0)112 192 9100
FireClassSalesLATAM@tycoint.com



- 6** Tyco Fire Protection Products
c/ Isaac Peral 3
28823
Coslada (Madrid)
Spain

Tel : +34 (0)913 807 460



- 9** Tyco Fire Protection Products
1002, Wing, c'/ 10th Floor
Godrej Coliseum
Sion, Mumbai - 400 022
India

Tel : +91 (0)226 628 662 8
Fax : +91 (0)226 628 665 0



- 10** 59-61. Etele út
1119
Budapest
Hungary

Tel: +36 (1)481 138 3



- 11** Tyco Fire Protection Products
2 Serangoon North Avenue 5
07-01
Singapore 554911

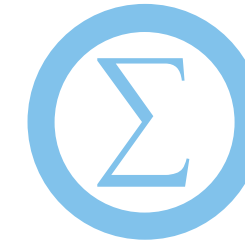
Tel : +65 6577 4360
Fax : +65 6481 8791
info.apac@tycofp.com

Why FireClass?

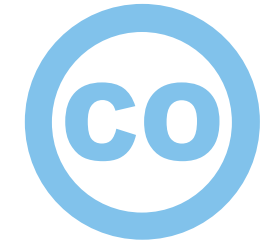
FireClass is a digital fire detection technology built on over 50 years of dedication and performance from Tyco Fire Protection Products.



FireClass is a digital fire detection technology built on over 50 years of dedication and performance from Tyco Fire Protection Products.



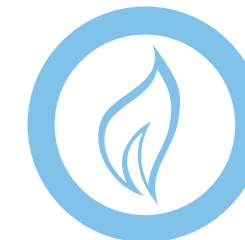
The panel's core technology uses a digital fail safe algorithm to talk to each device and determine if that device is functioning as it should. The system can then promptly and precisely alert facilities management personnel, based either on-site or remotely, to any breakdowns or maintenance issues.



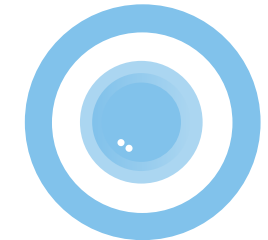
FireClass provides an extended 10 year lifespan on the CO sensitivity element. This device is primarily used to protect occupants whilst they sleep.



Widely chosen as the fire detection product of choice, FireClass addressable control panels take today's computer performances and adapt them to become one of the most effective and sophisticated fire alarm panels on the market.



FireClass encompasses three main levels of detection including optical smoke detection, heat detection and detection of CO levels. Depending on the application; these can be adjusted to various levels of sensitivity in order to sense a fire and reduce false alarms.



The Triple Sensor Detectors can sense all signatures of fire including heat, smoke and CO. The system analyses all three channels of data and rapidly analyses, using sophisticated algorithms to provide an accurate confirmation of a real fire.

FireClass Scenarios

Commercial

The FireClass range comprises a complete fire detection solution for all commercial environments. Bringing sophisticated fire detection technology into these public spaces, used by millions each day, will ensure a safe and secure environment.

FireClass systems provide an unbeatable level of accuracy and ease of use for building personnel, installers and firefighters. At the first sign of danger, the FireClass system triggers a pre-programmed coordinated alarm, people are led out of the danger area via both audio and visual messages, and extinguishing systems are activated if required.

Our detectors can be found in almost every commercial environment including office complexes, hotels and shopping centres, schools and hospitals around the world.

FireClass Scenarios

FireClass for Residential and Work Environments

Keeping your home, business, loved ones and property safe is of paramount importance. For ultimate safety and adaptability FireClass products can be installed to protect any environment.

The FC501 Panel saves installation time and cost, and provides an out-of-the-box solution which does not require configuration. It's easy to set up with a little training and has full local and remote monitoring control.



FireClass Scenarios

FireClass for Office and Corporate Environments

In corporate office buildings false alarms can be an expensive and time consuming blight on business and the fire and rescue services. The FireClass range features a number of enhanced fire detection technologies designed to improve the management of false alarms and reduce their impact. These include, the Triple Sensing Detectors (sensitive to Heat, CO and Optical smoke detection) FireClass Graphics fire alarm management system and a selection of manual call points with covers.

FireClass for Retail Environments

Retailers large and small face the constant challenge of loss prevention, whether the risk is vandalism or arson, customer or staff theft, fraud or robbery. Protecting a business against fire and smoke damage, but most importantly, safeguarding the welfare of employees and customers, should be of primary concern in the overall running costs of any business.

Industry statistics tell us that commercial fires cost more than £2 billion to the UK economy in 2013 and 60% of private businesses never recover from a fire.

Tyco is committed to helping customers achieve their commercial and industrial safety and security goals so that they may maintain and improve business productivity.

FireClass FC501 offers the ideal solution for retail premises; from large and multi-site to smaller, single shops. Retailers often alter or modify their internal shop architecture and some shop alterations are often carried out with conservative time frames in order to minimise off-trading. FC501 provides triple loop inputs, spurs, radials. It can be wired in many ways to achieve the desired result for a suitable fire detection system as it has the flexibility to match requirements in any shop size, whilst being able to adapt to new layouts as easily and quickly as possible. With the added advantage of integrating IP based cameras into the Graphics package, to allow remote confirmation of alarms.



FireClass for Hotels

Hotels often offer a complex challenge with varying room sizes, restaurants, leisure facilities and public areas all under one roof. The reliability of the system is paramount as its primary function is to protect life. FireClass systems provide the most effective cover, performance you can count on with minimum disruption to the operation of the building and its occupants.

Most hotel bedrooms have en-suite facilities containing bath and shower. Both of these can generate substantial amounts of steam which is known to trigger some smoke detectors. This disruption could be extreme and result in an unnecessary full evacuation. Various sensitivities are available to truly tailor the system to the building owner's needs. Guests can be inconvenienced if sleeping, eating in the restaurant, relaxing in the bar, or in a meeting or conference in one of the hotel's meeting rooms. Not to mention the financial penalties when guests refuse to pay or take their business elsewhere for the next visit.

The FC460PC Multisensory uses sophisticated technology to ensure that the steam escaping from the en-suite facility will not trigger an alarm. However the sensor is still highly sensitive to the products of combustion generated by a smouldering fire and will raise an alarm even before a normal sensitivity smoke detector, due to its ability to sense the combustion gas; carbon monoxide, produced by the fire.

FireClass for Care Home Environments

The reliability of a suitable fire detection and alarm system within a residential care home is paramount as its primary function is to protect life. Unlike most buildings whose occupants are of sound mind and body, this is not always the case in residential care premises and this should be taken into account when planning your fire detection system.

Disruption can be stressful to residents and it is therefore vital that the chosen system provides effective cover, performs reliably, and gives the maximum possible warning in the event of fire, given the additional difficulties in evacuating residents to safety.

Furnishings in residential homes often contain carbon. When these materials are involved in a slow smouldering fire, carbon monoxide is released. The combustion gas is highly toxic, odourless and colourless and poses a major threat to a person sleeping. Long before there are any visible signs, toxic gases can reach dangerously high levels. In older and frailer people the threat to life is exacerbated.

By installing the FC460PC Multisensory in each bedroom, protection is afforded to the highest level from the emissions from a fire of heat, smoke and carbon monoxide.

These three detection elements combine to provide a highly sensitive detector which although classed as an optical smoke detector, increases its sensitivity in a fire where there is a presence of carbon monoxide. This enables the detector to operate, in most cases, much faster than a standard optical smoke detector enabling the occupant of the room to be rescued earlier and suffering less from the effects of smoke/toxic gas inhalation.

There are times when vulnerable occupants within a building are at risk but sounding a high level warning will just cause distress. In such cases FireClass sounders and beacons are addressed which means although installed on the same cables they can be programmed, when to operate and at what volume. Volume is set in software so some sounders can be set at lower levels than others, or even turned off leaving only the flashing beacon operating. This allows the designer to be flexible in his design whilst the installer and user do not incur extra costs for additional wiring of sounder circuits. In some cases designers even opt to use the feature whereby they sound just the one detector in alarm for a period of time, to allow the occupant to clear the cause of the activation.

FireClass for Manufacturing and Warehouse Environments

Warehouses and manufacturing spaces can vary enormously in size and process, some being fully automated and some having multiple occupants at different times of the day.

Distribution warehouses can be difficult places in which to work as they may require specialist platforms for working at height and could present on-going problems for maintenance and repair.

Equipment used and access to escape routes are also major factors when planning and designing an effective fire detection system. Alternatives to the standard point detection systems are smoke beams, and aspirating systems within storage racking, providing the solution for a sensitive yet stable fire detection solution.

The FC460 addressable multisensory detectors are ideal for this environment. They can be programmed in such a way that at certain times of the day, when the building is fully occupied and the risk of fire going undetected is low, the smoke elements can be turned to low sensitivity and then turned back up to their normal sensitivity during unoccupied periods.

The FC460 addressable point detectors also have added protection applied to printed circuits and vital components to enable them to survive in environments that are more difficult. Threshold compensation overcomes the effects of dirt and dust and prolongs the life of the detector reducing lifetime costs. You can also read the contamination level of each sensing element for each device in the FireClass range at any time you wish.

The Fire Ray 5000 smoke beam and FC410 beam detector module allows direct connection to the addressable loop, saving wiring and associated costs. The beam detector is motorised so if the beam alignment shifts due to building movement, it realigns itself automatically.

The ICAM AS 460 and 461 single or dual air sampling systems combines the best of the FireClass 460 PH multisensory with proven air sampling techniques. This form of detection is ideal within racking where plastic pipes are all that exist and can easily be protected against the risk of mechanical damage.

FireClass a Solution Focused Approach

The FireClass product range has been consistently developed with the views and needs of customers and end users. All our products are specifically focused on providing the most effective and efficient system for the environment and for those responsible for installing and maintaining the system. Below are some examples.

Customer Requirement:

Often on a construction site, such as a newly built office block, fire detection installation contractors are requested to provide a first fix installation to all detectors but they are not able to return to the site for several months to complete the installation due to the installation of the ceiling.

Solution:

On a recent installation with Fire Detection and Suppression, Bristol, for installation of all detectors FireClass recommended that our customer use the Ceiling Tile Adaptor Kit (517.050.060), this way the engineers were able to not only first fix devices but they were also able to install and commission all smoke detectors and complete programming and testing in one visit.

The engineers clipped their standard bases to the ceiling tile adaptor back box then installed the detectors. They were then able to connect the devices to the loop and test each device.

On this project, the engineers were able to leave the ceiling tile adaptor bezel and clamp, which had been installed by the ceiling tile contractor, in positions marked on the installation drawings. This was done by drilling a 127mm hole in each tile and then pushing the bezel and clamp into the hole. The contractors were then able to pull through each detector as they installed the ceiling tiles.

Upon return to site the fire alarm engineers simply re-tested the system and handed over to the client to manage. No additional visits were required to second fix detectors, therefore offering a cost saving to the end user.

Outcome:

FireClass was able to save the end user costly re-visits for continued testing and commissioning of the system. This enabled our customer to win further work with this client and other clients as they had the time available to send their engineers to site.

Customer Requirement:

When dealing with a monitoring gas extinguishing system for instance in a server room with addressable fire detection in all areas, customers often require the system to be controlled by a central panel located in the engineers' maintenance office.

Solution:

Within the FireClass range, we offer an addressable panel which uses addressable smoke and multi sensors in the server rooms. This could be used to distinguish a fire condition in each server room giving full details and enabling Quad Input/Output units (555.800.771) to be programmed to operate a Prescient III gas extinguishing panel to operate the gas suppression required in the correct area.

The system also uses addressable detection for all areas outside of the server rooms and effectively reports back to the same panel. Using a four loop panel provided the capacity to have up to 1000 addresses, consequently leaving the end user enough space on the loop for future expansion.

These signals were all then reported back to a FireClass Graphics system (FCG-001) where, with the full flexibility of a computer, the end user was able to monitor all activations from site on a graphical representation of the area where the incident occurred. The user friendly software also enabled the end user to customize how they wanted to see the screen and all relevant buttons for controlling the fire alarm panel.

Outcome:

Using FireClass the customer was able to provide a building solution, using an addressable fire alarm panel and devices together with gas extinguishing panels and a full graphical interface to control the system and mimic the status at all times.



Total Solutions from Tyco

// A global company with a strong local presence
// Tyco Fire Protection Products' mission is to advance safety by finding smarter ways to save lives, improve businesses and protect where people live and work.

Our global presence, local knowledge, diversified product ranges and investment in research and development mean we can offer a complete solution from design, manufacture and installation to outstanding after sales support and training.

Part of our strength lies in our brand portfolio and complete solution offering. TFPP offers products with some of the world's most trusted and recognized fire suppression, detection and mechanical products.

Individually, each represents the highest levels of research, development and proven performance, with ISO 9001-2000 quality registrations and major international performance standards and approvals. Together, they add up to the most encompassing source of protection a customer will find.

Fire Detection

With over 50 years of experience designing fire detection technology, Tyco offers a solution for every environment from simple conventional systems to complex integrated systems for hazardous industrial installations. Their team of expert engineers and designers are continuously researching fire detection technology to develop innovative and more enhanced systems to improve the fire safety and protection.

This expertise and heritage has been responsible for innovative solutions over the years, including the first carbon monoxide fire detection technology for commercial environments and triple sensing technology.



Special Hazards

For today's businesses, survival depends on the management of critical assets like never before. With more than 600 years of combined experience in special hazard fire suppression, TFPP sets the standard for the suppression and detection of fire in industrial, commercial, and other special hazards – offering a solution which considers all the risks of the hazard.



Dedication to Innovation.

Each year, TFPP invests millions of dollars and countless hours in the development of new technologies to safeguard lives, property and the environment. Our innovations are based on customer needs, the outcome of a thorough understanding of their unique industries and the challenges and opportunities they face.

Supported by our advanced research and development facilities, and modernized manufacturing platforms throughout the world, the solutions we provide deliver measurable value, performance and sustainability to our customers.

For more information on complete solution offerings from Tyco please visit www.tfpemea.com



Water Fire Suppression

More than 30 million specialised sprinklers are installed to protect environments and people throughout the world every year. Each year Tyco is investing in new innovative technology to ensure our solutions meet the needs of our customers and offer the smartest protection for every environment.



Tyco Security Products Introduction

American Dynamics

DSC

KANTECH

BENTEL
SECURITY

exacq

PROXIMEX

Visonic

CEM SYSTEMS

Elpas

SOFTWARE HOUSE

SUR-GARD

Multiple Discipline Systems Integration

Tyco Security Products, a business unit of Tyco, is a unified group of world- leading access control, video and intrusion brands. These brands - American Dynamics, Bentel, CEM Systems, DSC, Elpas, Exacq, Kantech, Proximex, Software House, Sur-Gard and Visonic - have more combined years of experience in the security industry than any other group in the world. Our security integration platforms, built by our developers from across all product disciplines, allow our customers to see more, do more, and save more. Our solutions today are designed to be compatible with the technology of tomorrow.

In more than 40 offices with more than 2,000 employees around the world, we support our global, local, and regional customers to the highest level with sales, technical support and customer service before, during, and after the sale. Our world-class channel of dealers, integrators and distributors are trained to help customers with any complex problem in virtually any industry - retail, residential, gaming, transportation, healthcare, finance, education, government, POG to name but a few.

Pride in our products and service is what drives us. Our products backed by thousands of support, service and quality assurance personnel.

And with the most trusted brands in security in one portfolio, we offer the most comprehensive range of premium solutions in the industry to our customers. An unbeatable combination from a single source.

Getting systems to integrate is difficult, keeping systems integrated as each discipline upgrades and advances is even more difficult and time consuming. Having all disciplines designed to work together under one company guarantees success. It saves your time trawling between different manufacturers often overseas and in different time zones.

These integration capabilities have been expanded further with victor. From a single, intuitive interface, victor lets you manage live/recorded video from Intellex DVRs, VideoEdge NVRs, and hybrid recorders. Now unified with Software House C•CURE 9000 access control system and fire systems from Tyco Fire Protection products, victor provides single-point event management. victor is designed to handle the high throughput of HD and megapixel cameras and easily manages real-time alarms and events including fire.



FireClass are sponsors of the British Superbike Championship 2015

Icon Library



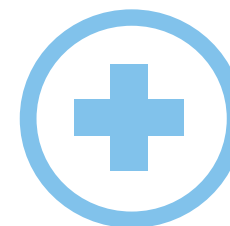
Retail



Education



Data Center



Hospital



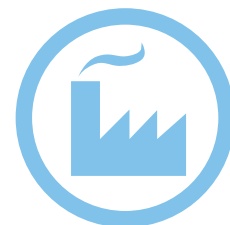
Restaurant



Office



Hotel



Factory/
Warehouse



Fire in Dusty
Environment



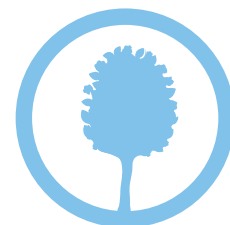
Small/ Medium
Building Size



Medium/ Big
Building Size



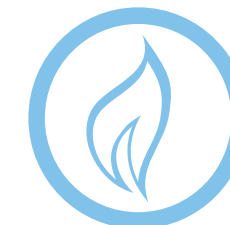
Extinguishing
Feature



Outdoor
Feature



Easy to Install
Feature



Fast Burning
Flame



Slow Burning
Flame

Best in Class from FireClass

Reflective Sound Monitoring (RSM)



Reflective Sound Monitoring or RSM is employed to monitor the audio output of sounders. The technology allows the product to measure its sound output via a built in microphone. When activated during a routine test, this sounder can report back if it is functioning - cutting out the need for any human presence.

RSM is particularly beneficial during regular weekly sounder tests. The technology allows the system to listen for audibility whenever the sounders are operated and the panel will alert the user if any sounders fail to operate. Failure of a beacon would also generate a fault at the control panel.

Often regular testing of sounders is overlooked as the responsible person is not always able to access an entire site to complete the test. For example in areas such as schools, hotels and healthcare environments, access can be difficult and a test can involve having an onsite facilities manager standing at each sounder to test it.

Without regular comprehensive checks, the integrity of the system can suffer.

Reflective Sound Monitoring is a true fail safe technology that eliminates any uncertainty. It can provide a full, accurate status on the functionality of all sounders on the site and can be utilised on most projects to the advantage of both the occupants and the building owner.

FC460PH Multi Sensor Detector



- Combined optical and heat sensor smoke detector.
- Most flexible detector in FireClass range - can be adapted to provide protection to a range of environments.
- Detects a wide range of fires including low smoke and low heat.
- Operates in various modes and sensitivities to heat and smoke.
- Modes can be fully controlled and programmed via the panel.
- Software can be configured into two device address points to allow the panel to treat the device as two individual devices should the need arise.

The FC460PH is the most flexible detector in the FireClass range. With its ability to detect a wide range of fires, from a flaming to a smouldering fire, the combined optical and heat sensor smoke detector is the preferred choice for a range of fire detection applications.

These include businesses in the light industrial, retail and office environments. The smoke detector operates in a number of approved modes and sensitivities that can be dynamically selected to suit different environmental conditions. Incorporating the FireClass digital detection algorithms, a market leader providing fire security peace of mind for its users, the smoke detector is fully approved, including EN54 AND CPD.

The multi sensor has six general modes as along with several sensitivity settings. The panel can switch between any two of these modes and sensitivities by method of day/night time points, manual operation of the panel's day/night button or also via device input. Alternatively the device can be simply left in one mode permanently.

The six modes are:

- 1- High Performance Optical and 60°C Fixed Temp. (Default Mode)
- 2- High Performance Optical.
- 3- Standard Optical Smoke only .
- 4- Heat Only – Rate of Rise.
- 5- Heat Only – 60°C Fixed Temp.
- 6- Standard Optical + 60°C Fixed Temp. (As well as Normal, Low and High sensitivity settings for all optical based modes)

FC460PH Multi Sensor Detector



The High Performance Optical Mode (HPO)

The HPO mode is designed to allow the panel to enter an alarm state more readily than it would from a standard optical detector. For instance if there is less smoke than normal being produced when a fire is burning, or if there is a sudden, intense fire caused by ignition of a mixture of air and a dispersed flammable substance; the HPO mode will use an algorithm to effectively increase the sensitivity of the smoke sensing element as the temperature rises dramatically.

Basic High Performance Optical Mode

This mode is a smoke detection mode only, it does not allow the panel to alarm on detecting heat at all, it purely uses the heat level sensed to adjust the sensitivity to smoke in its environment.

High Performance Optical Mode with Fixed Heat

This mode provides a safety backstop; if the ambient temperature reaches or exceeds 60°C the panel will alarm due to heat as well as smoke regardless of smoke levels.

The choice of modes makes the FC460PH a versatile device which can suit many applications and can also be the best option when it proves difficult to determine what type of device would best suit a situation.

For example in a difficult to access area such as a lift shaft or high ceilings or locked rooms, controlled areas, HMO type apartments where accessing and changing the physical device could be problematic.

The modes of this device (and indeed the majority of the other FireClass loop devices) are fully controlled from the panel hence there is no need to revisit the physical device to change it or its settings. As with all FireClass loop devices they are software addressed thus reducing problems otherwise associated with hardware addressing methods/wear and tear.

Finally, the device can even be split (by means of configuration software) into 2 device address points to allow the panel to treat the device as though it were 2 individual devices should the need arise.

Multi Account Engine



FireClass Console Multi Account Engine (FC MAE) is the newest FireClass software that allows users to monitor multiple FireClass systems spread across the world.

It can:

- Manage up to 32 FC500 series panels (FC501, FC510, FC520) connected via Ethernet through the FC500IP3 module.
- Show real time status of the panels.
- Alert the operator once an event occurs in one of the monitored systems.

Best in Class from FireClass

Addressable Call Points



There is a comprehensive range of call points for use with FireClass addressable systems, using the robust and reliable FireClass open protocol. All the call points are designed to enable an alarm signal to be given by a plastic resettable element, which means that the call point can be easily reset after it has been activated. Addressable call points have:

- Compact, modern styling.
- EN54-11 Certification.
- Integral short circuit isolator.
- Dual colour LED indication.
- Test key for fast testing.
- Optional transparent hinged cover.
- IP67 Ingress protection models for external applications.

DPK6 – Duct Probe Unit



The DPK6 duct probe unit has been developed to detect smoke in ventilation ducts and offer significant benefits in terms of performance and installation. Features of the DPK6 are:

- Designed to comply with EN54 part 27.
- One-pipe air sampling system.
- Patented Venturi pipe and duct housing.
- Test hole on cover.
- Simple installation.
- Sensitive flow indicator.
- Simple service and maintenance.
- Range of aluminum probe tubes are available for ducts up to 2700 mm.

Addressable Range





FireClass 501

- Low cost entry level digital panel.
- Auto learn and auto addressing with Intelli-Zone feature
- Full out-of-the-box functionality.
- Versatile easy to install addressable alternative to conventional.



FireClass 32, 64 and 240

- Digital addressable panels offering 32, 64 or 240 zones.
- Up to 1000 devices per panel.
- Dedicated EN54 approved network.
- Up to 24000 devices per network.



FireClass FC460 Detection

- Provides the best in class environmental and detection performance with the capability of detecting all fire types.
- Range includes an Optical/Heat Multisensor and Optical/Heat/CO triple multi sensor.
- Automatic self testing of each sensor element.
- 360 degree alarm, fault and isolated LED on each detector.
- Six EN54 approved modes for the Optical/Heat multi sensor.
- Optical/Heat multi sensor can use different modes in day/night settings.
- All optical modes have three EN54 approved sensitivities.
- Lower lifetime cost offering an extended service life.



Detector Bases and Accessories

- Range of standard bases, isolator bases, sounder bases and sounder/beacon bases.
- Addressable functional bases can be programmed via a download to adjust volume, tone selection and flash rate complemented by the time saver ceiling adaptor allowing fast and easy installation.



Call Points

- The most recognisable indoor and outdoor callpoint.
- Built in isolator.
- Number of accessories available.



Addressable Modules

- Wide range of input, output and multi function modules to suit all applications.
- Universal detector module to connect two conventional circuits.
- Self powered high voltage relay that can switch mains voltage directly from a module of the FireClass loop.
- A choice of quad input/output modules designed for a variety of interfacing applications.



Sounders and Beacons

- Comprehensive range of sounders and beacons.
- Wide selection of sounds to match new and existing applications.
- Sounder and beacon elements operated separately by the FireClass panel to facilitate most evacuation strategies.
- Volume, tone and flash rate can be configured by software individually or globally.



FireClass 500

- 1 or 2 loops panels.
- Auto learn technology.
- Up to 250 devices per loop.
- Easy to configure.
- User friendly graphical maps.



FireClass Graphics Software

- Graphical emergency management systems.
- Client/server system, allowing several workstations to operate over a network.
- Software for remote monitoring over TCP/IP.
- Multiple site management over IP from a single workstation.

Addressable Range Overview



Comprehensive Addressable Range

The FireClass Addressable range of panels offer the customer a very easy to install and configure out-of-the-box triple circuit single loop stand alone panel with 128 addresses and a range from a 1 loop panel up to a 4 loop panel with up to 250 addresses per loop, from 32 to 240 zones per panel and up to 7 fully functional repeaters per panel with 24 panels networked together. FireClass also offers a full range of low false alarm multi sensor detectors and an extensive array of field devices.

Fully Approved

In order to ensure peace of mind for both the installer and end user, FireClass products are third party approved and certified to relevant European standards. FireClass approvals go beyond the minimum requirements including EN54 approval of the FireClass network, EN54 detector approval in all detection modes and EN54-13 system approval for the networkable panels and a wide range of loop devices.

Freedom of Choice

FireClass provides an open protocol solution widely available throughout the market via trade and distribution specialists ensuring freedom of choice for installers and end users. Easy to use programming software is available to installers and end users, with the majority of service functions available through the panel user controls. Device configuration and text changes now also available through the panel user controls.

Robust Digital Protocol

Developed originally for the harsh marine environment FireClass uses a robust digital protocol that has been proven to withstand poor, damp and damaged cables for over 20 years. The resilient digital protocol works on most existing cables and allows for flexible installations when T's are required. The loop can be made from spurs for a simple upgrade of conventional systems and allows up to 250 addresses per loop with 500mA for broad applications.

Resistance to False Alarm

The range includes a high quality optical smoke detector together with various multi sensor devices. The ultimate in false alarm resilience is provided by the triple sensing detector, combining optical, heat and carbon monoxide sensing technologies. Day/ Night detection modes also allow for false alarm reduction when the building is occupied.

Panels



Panels

FC501



General Information

FC501 is the newest FireClass addressable solution for small systems brought to you by Tyco Fire Protection Products.

Conceived to be extremely easy to install and use, the FC501 is an out-of-the-box panel which offers the simplicity of a conventional system and the benefits of the FireClass addressable digital technology.

Auto Addressing, Intelli-Zone, On screen help function, USB interface to upload the configuration and the easiness to configure the panel via integrated keypad are only some of the features that allow the installation and configuration of the FC501 in just a few simple steps.

This 3 in 1 loop panel enables 3 circuits of devices to be connected to this single loop panel providing greater flexibility and simplifying the wiring process. Once the loop devices are wired the system can be auto addressed by a single click. The devices are automatically assigned to 3 zones, according to the physical loop they are connected to, the system is ready to protect the site.

If the system configuration needs to be modified and the devices re-addressed or the zones re-programmed, the powerful Intelli-Zone feature significantly reduces the configuration time allowing the installer to perform test and programming at once.

The configuration software is extraordinarily user friendly and provides a very easy to use graphic interface that displays all devices connected to the different zones. A battery and wire calculation tool is included in the software to help the installer design the system. A free graphic maps software, based on a multilevel maps tree structure allows a remote real time visualization of any loop, zone and point status and the simple remote user interface with control buttons (reset, silence, evacuate), allow users to manage the system from any location in the world.

The FireClass FC501 control panel supports a total of 128 devices, including the double and triple technology detectors and a multitude of modules and sounders, as befits one of the widest ranges available in the market.

General Features

- 3 in 1 loop panel.
- Up to 400mA current dynamically shared across 3 loop circuits.
- Up to 128 Addresses / 32 Zones.
- Easy to programme.
- Out-of-the-box, fully programmable via keypad.
- Auto Addressing.
- Auto Mapping with Intelli-Zone feature.
- On screen help function.
- USB port dual role Host/Device to upload/download language file, firmware, configuration, vocal messages, etc.
- Walk test function.
- Loop break location.
- 4000 Event Log.
- On board PSTN communicator.
- Optional IP board.
- Up to 4 repeaters.
- Fast and simple system configuration via software, also offline.
- Battery/wiring calculation and customizable cables database.
- Remote real time visualization of control panel loop & zone status, etc via IP.



- Easy Remote user interface with control buttons (reset, silence, evacuate).
- Multilevel map based on a tree structure.
- Capability to print zone label sheet for front panel customization.

Triple Circuit Single Loop Panel - 2,7A PSU English



Triple Circuit single loop panel, supporting up to 128 loop devices. The overlay contains text strings in English. 2,7A power supply unit.

Product Order Codes

FC501-H 557.200.718



Triple Circuit Single Loop Panel - 1,8A PSU, Icons



Triple Circuit single loop panel, supporting up to 128 loop devices. The overlay has icons, this makes the panel suitable for all markets. 1,5A power supply unit.

Product Order Codes

FC501-L 557.200.719



Triple Circuit Single Loop Panel - 2,7A PSU, Icons



Triple Circuit single loop panel, supporting up to 128 loop devices. The overlay has icons, this makes the panel suitable for all markets. 2,7A power supply unit.

Product Order Codes

FC501-HK 557.200.720



Panels

FireClass FC500



General Information

The EN54 certified FireClass 500 system is simple to install and easy to use. Innovative software tools are provided to simplify all stages of a project from system design to final commissioning.

The Fireclass 500 system's large clear panel displays and optional real-time graphics system provide the user with accurate information of fire and related events. A high degree of flexibility across the Fireclass range makes it suitable for a variety of small to medium size applications. Two versions are available with 1 or 2 loops, with up to 250 devices per loop.

The ability to network (via RS485) up to 8 repeaters and up to 8 panels in a master-slave network means that a single system can monitor up to 4000 sensors / devices. The availability of the EN54 certified FC500IP and FC500PSTN communication modules allow sites to be easily and effectively monitored, even from remote locations.

The on-board conventional zone feature of the panel plus additional addressable conventional modules available on the loop, make the system suitable as a replacement for older conventional installations without the need to replace all the sensors.



General Features

- EN54 certified.
- 1 or 2 loops.
- Up to 250 addresses on the loop.
- Automatic drift compensation.
- 1 conventional zone.
- 64/128 programmable software zones.
- 16 programmable OC output (8 monitored).
- 1 Fire NAC output.
- 1 or 3 NAC outputs, monitored, silenceable and programmable.
- Fire and fault output relay.
- RS485 interface: up to 8 repeaters and 4 multi functional Interface.
- 4000 event log.
- PSTN phone dialer and IP module available.

Product Order Codes

FC510 - 1 loop panel	557.200.721
FC520 - 2 loop panel	557.200.722
FC500REP Repeter	557.200.723

Panel Accessories

IP Module



The FC500IP v3 is an IP Module which is used to connect control units in the FireClass 500 range to a LAN. With a public IP address, it is also possible to manage and monitor the control unit from anywhere in the world, as long as you have access to the Internet.

The new version 3 is able to communicate events up to 3 receivers using SIA protocol.

General Features

- Connects the FireClass 500 to the LAN.
- Remote maintenance and programming via the IP address.
- Configuration DHCP or manual.
- 128-bit AES Encryption.
- Can be installed inside the FireClass 500 panel enclosure.
- Send events to alarm receivers using SIA protocol.

Product Order Codes

FC500IP3	508.031.743
-----------------	-------------



Multifunctional Interface



FC500MFI is a multi functional interface between FireClass 500 control panel and a simple fire brigade or a remote control board that can be placed at up to 1 km distance from the FireClass 500 control panel. Moreover a serial printer, able to print out all events occurring in the system, can be connected to each FC500MFI as well.

General Features

- Simplified connection to fireman's interface or remote control panel.
- Interface for serial printer.
- Up to 4 FC500MFI per system connected through the bus RS485.

Product Order Codes

FC500MFI	508.031.742
-----------------	-------------

Panel Accessories

FC500 Panels Monitoring Software



FireClass Console Multi Account Engine (FC MAE) allows users to monitor multiple FireClass systems spread across the world from a single workstation.

It manages up to 32 FC500 series panels (FC501, FC510, FC520) connected via Ethernet through the FC500IP3 module, showing their real time status and alerting the operator once an event occurs in one of the monitored systems

General Features

- Remote management via Ethernet.
- Monitors up to 32 FC500 Series panels (FC501/510/520).
- Pop-up and audio notification on new events.
- Traffic light style indicators for panels status.
- Overall system status indicator.
- Integrated with FireClass Console and FireClass 500 Console software.
- Quick link to the FireClass graphic maps.
- Single log file for the whole monitored system.
- Data encryption by AES128.

Product Order Codes

FC-MAE 557.202.726



Telecom Module



FC500PSTN is a Telecom Module which allows implementing the functions of Channel Telephone Dialler and Telemonitoring (functions E and J of standard EN54-1:1996), on the FC510 and FC520 control panels.

General Features

- Built-in multiprotocol digital communicator: Contact ID and SIA.
- 32 programmable telephone numbers.
- Programming by PC via FireClass 500 Console.
- Check for telephone line cutting.
- Excluded line tone check.
- Overvoltage protection.
- Digital message recording/playback.
- Built in speaker for message playback.
- Installed inside the FireClass 500 control panel cabinet.

Product Order Codes

FC500PSTN 508.031.741

USB 5m Cable Type A <=> Type A



Allows connection of a FC501 panel to a PC.

Product Order Codes

USB 5m cable type A <=> type A 508.032.037

Cabinet for Spare 38Ah Batteries



Extended Battery Cabinet housing up to two 12 V, 38 Ah batteries providing extended battery backup time for the system.

Product Order Codes

FC500BX 508.032.036

FireClass FC500 Spares

Product Order Codes

B055-1 Motherboard for FC510	508.032.038
B055-2 Motherboard for FC520	508.032.039
B078 Motherboard for FC501	508.032.040
B054-D Display for FC510/20	508.032.041
DISP-FC501Spare Display for FC501	508.032.042

Panels

FireClass 32 One Loop Addressable Panel



General Information

The FireClass 32 digital addressable panel has been designed to work with FireClass protocol devices. The panel is powerful, user friendly and designed and manufactured to a high standard and certified to CPD and EN54, Parts 2 & 4.

The panel operation provides considerable processing ability enabling highly definable cause and effect programming either local to the panel or network wide and also between our FireClass64 and 32 range of panels.

This panel is ideally suited to installations which require powerful and comprehensive sounder and control/shutdown functions or can be used as a standalone system for monitoring site wide inputs or outputs.

The panel is programmed to operate to specific site requirements by means of a powerful yet easy to use software tool which can be programmed at a basic level at the panel or with our FireClass software editor.



General Features

- 250 addresses available on panel.
- 640 Character Display.
- Permanently character display system status.
- 32 Zonal LED's.
- Displays temperature, CO level and smoke level of each detector.
- 3000 event log.
- Special Cause/Effect programming.
- Manual and Automatic walk test and reporting functions.
- Automatic battery test.
- Detector service functions.
- Front panel controls enabling text and configuration changes.
- Up to 24 panels networkable.
- Choice of five fully functional repeaters with a maximum capacity of seven per panel.
- Standard integration protocols available (BACnet).

Product Order Codes

557.200.701	FC32 Single Loop 32 zone panel English
557.200.701.IT	FC32 Single Loop 32 zone panel Italian
557.200.701.NL	FC32 Single Loop 32 zone panel Dutch
557.200.701.SP	FC32 Single Loop 32 zone panel Spanish

FireClass 64 Two or Four Loop Addressable Panel



General Information

The FireClass 64 digital addressable panel has been designed to work with FireClass protocol devices. The panel is powerful, user friendly and designed and manufactured to a high standard and certified to CPD and EN54, Parts 2 & 4. The panel operation provides considerable processing ability enabling highly definable cause and effect programming either local to the panel or network wide and also between our FireClass32 and 64 range of panels.

This panel is ideally suited to installations which require powerful and comprehensive sounder and control/shutdown functions or can be used as a standalone system for monitoring site wide inputs or outputs. The panel is programmed to operate to specific site requirements by means of a powerful yet easy to use software tool which can be programmed at a basic level at the panel or with our FireClass software editor.



General Features

- Up to 1000 addresses available on panel
- 640 character display
- Permanently displays system status
- 64 Zonal LED's
- Displays temperature, CO level and smoke level at point in alarm
- 3000 event log
- Special Cause/Effect programming
- Manual and Automatic walk test and reporting functions
- Automatic battery test
- Detector service functions
- Front panel controls enabling text and configuration changes
- Up to 24 panels networkable
- Choice of up to 5 fully functional Repeater with a maximum of 7 per panel
- Standard integration protocols available (BACnet)

Product Order Codes

557.200.702	FireClass 64—2 Two Loop 64 Zone Panel English	557.200.707.NL	FireClass 64RA Repeater Panel 64 Zone 230Vac Dutch
557.200.703	FireClass 64—4 Four Loop 64 Zone Panel English	557.200.707.SP	FireClass 64RA Repeater Panel 64 Zone 230Vac Spanish
557.200.702.IT	FireClass 64—2 Two Loop 64 Zone Panel Italian	557.200.710	FireClass 64RD Repeater Panel 64 Zone 24Vdc English
557.200.703.IT	FireClass 64—4 Four Loop 64 Zone Panel Italian	557.200.710.IT	FireClass 64RD Repeater Panel 64 Zone 24Vdc Italian
557.200.702.NL	FireClass 64—2 Two Loop 64 Zone Panel Dutch	557.200.710.NL	FireClass 64RD Repeater Panel 64 Zone 24Vdc Dutch
557.200.703.NL	FireClass 64—4 Four Loop 64 Zone Panel Dutch	557.200.710.SP	FireClass 64RD Repeater Panel 64 Zone 24Vdc Spanish
557.200.702.SP	FireClass 64—2 Two Loop 64 Zone Panel Spanish		
557.200.703.SP	FireClass 64—4 Four Loop 64 Zone Panel Spanish		
557.200.707	FireClass 64RA Repeater Panel 64 Zone 230Vac English		
557.200.707.IT	FireClass 64RA Repeater Panel 64 Zone 230Vac Italian		

FireClass 240 Two or Four Loop

FireClass 240 Two or Four Loop Addressable Panel



General Information

The FireClass 240 digital addressable panel has been designed to work with FireClass protocol devices. The panel is powerful, user friendly and designed and manufactured to a high standard and certified to CPD and EN54, Parts 2 & 4. The panel operation provides considerable processing ability enabling highly definable cause and effect programming either local to the panel or network wide and also between our FireClass32 and 64 range of panels.

This panel is ideally suited to installations which require powerful and comprehensive sounder and control/shutdown functions or can be used as a standalone system for monitoring site wide inputs or outputs. The panel is programmed to operate to specific site requirements by means of a powerful yet easy to use software tool which can be at a basic level at the panel or with our FireClass software editor.



General Features

- 1000 addresses available on panel.
- 640 character display.
- Permanently displays system status.
- Displays temperature, CO level and smoke level of each detector.
- 3000 event log.
- Special Cause/Effect programming.
- Manual and Automatic walk test and reporting functions.
- Automatic battery test.
- Detector service functions.
- Front panel controls enabling text and configuration changes.
- Up to 24 panels networkable.
- Up to 7 fully functional repeaters available.
- Standard integration protocols available (BACnet).

Product Order Codes

557.200.704	FC240—2 Two Loop 240 Zone Panel- No Zonal LED English
557.200.705	FC240—4 Four Loop 240 Zone Panel- No Zonal LED Display English
557.200.704.IT	FireClass 240—2 Two Loop 240 Zone Panel Italian
557.200.705 .IT	FireClass 240—4 Four Loop 240 Zone Panel Italian
557.200.704.NL	FireClass 240—2 Two Loop 240 Zone Panel Dutch
557.200.705.NL	FireClass 240—4 Four Loop 240 Zone Panel Dutch
557.200.704.SP	FireClass 240—2 Two Loop 240 Zone Panel Spanish
557.200.705.SP	FireClass 240—4 Four Loop 240 Zone Panel Spanish

Addressable AC Repeaters



General Information

The FireClass range of repeaters are designed for use with the FireClass 32, 64 and 240 panel ranges.

There is a dedicated AC model available for the FireClass 32 panel and both AC and DC versions available for the FireClass 64 and FireClass 240 systems.

The DC repeater is supplied in a compact and stylish housing ideal for use where space is limited or aesthetics are important.

The repeater has an identical backlit LCD display as per the main panel and complements the system by offering full user control.

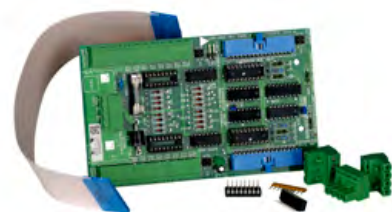
Up to 7 repeaters can be connected to the repeater terminals via the remote bus.

Product Order Codes

557.200.706	FireClass 32RA Repeater Panel 32 Zone 230V English
557.200.706.IT	FireClass 32RA Repeater Panel 32 Zone 230V Italian
557.200.706.NL	FireClass 32RA Repeater Panel 32 Zone 230V Dutch
557.200.706.SP	FireClass 32RA Repeater Panel 32 Zone 230V Spanish
557.200.707	FireClass 64RA Repeater Panel 64 Zone 230Vac English
557.200.710	FireClass 64RD Repeater Panel 64 Zone 24Vdc English
557.200.708	FireClass 240RA Repeater Panel 230Vac - No Zonal LED Display English
557.200.708.IT	FireClass 240RA Repeater Panel 230Vac - No Zonal LED Display Italian
557.200.708.NL	FireClass 240RA Repeater Panel 230Vac - No Zonal LED Display Dutch
557.200.708.SP	FireClass 240RA Repeater Panel 230Vac - No Zonal LED Display Spanish
557.200.711	FireClass 240RD Repeater Panel 24Vdc - No Zonal LED Display English
557.200.711.IT	FireClass 240RD Repeater Panel 24Vdc - No Zonal LED Display Italian
557.200.711.NL	FireClass 240RD Repeater Panel 24Vdc - No Zonal LED Display Dutch
557.200.711.SP	FireClass 240RD Repeater Panel 24Vdc - No Zonal LED Display Spanish

Panel Accessories

16 Way Universal I/O Expansion Board



The XIOM is a 16 way universal input/output expansion board. The I/O on the XIOM can be set in banks of 8 to operate as follows:

General Features

- LED driver outputs (10mA source).
- Relay Driver Outputs (100mA sink).
- Voltage Monitor Input (8 • 30VdcNormal).
- Volt Free Contact inputs.

Product Order Codes

XIOM 557.180.016

Input/Output Expansion Board



The IOB800 input/output expansion module is an LPCB approved board that provides 8 opto isolated digital inputs and 8 x 24Vdc relay outputs for providing I/O expansion capabilities to the FireClass control panels for interfacing to other fire protection systems and signalling devices. The IOB800 can be driven from either the control panel or from the remote bus.

Product Order Codes

IOB800 557.202.006

Loop Expansion module



The XLM800 Loop Expansion module is used to provide an additional two loops for the FC64 and FC240 addressable control panels, enabling the panels to support a maximum of 4 loops, each with up to 250 addresses. These units are fitted as standard to the FC64-4 and FC240-4 panels.

Product Order Codes

XLM800 557.202.007

Multi Purpose Interface Module

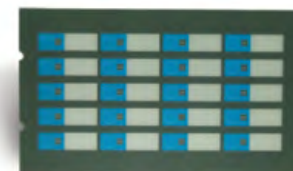


The MPM800 is used to provide various expansion capabilities via the remote bus (RBUS).

Product Order Codes

MPM800 557.202.012

20 Way Status Command Module



The COM820 status command module provides 20 programmable inputs and 20 programmable outputs. Each function includes a command button and yellow status LED with removable legends.

The functionality is programmed in the FireClass control panel with the typical applications being:

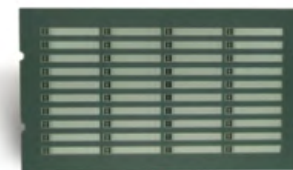
- Manual/off/auto/isolate functions for evacuation or plant control.
- Selective isolate and evacuate functions for fireman's control.
- Selective plant shutdown and override functions.
- Selective system delay and timer functions.

The COM820 can be driven from either the control panel or from the remote bus.

Product Order Codes

COM820 557.202.020

40 Way Fire/Fault LED Zone Indicator



The ANN840 LED annunciation module, provides 40 dual LED indications (red/yellow) that can be programmed to signal alarm and fault states. A slide in/out legend allows the user to customise the indicator labels.

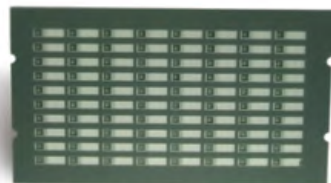
The ANN840 can be driven from either the control panel or from the remote bus.

Product Order Codes

ANN840 557.202.021

Panel Accessories

80 Way fire LED Zone Indicator



The ANN80 LED annunciation module provides 80 red LED indications that can be programmed to signal various states.

The ANN80 can be driven from either the control panel or from the remote bus.

Product Order Codes

ANN800 557.202.022

Printer With Front Cover



The PRN800 Printer Kit is designed for use with the FireClass addressable range of control panels and is fitted to the front door of the ANC ancillary housing units.

Product Order Codes

PRN800 557.202.024

Fuse Board



The FB800 fuse board provides terminations for 15 fused 500mA 24Vd output spurs from a single 24Vdc input.

Product Order Codes

FB800 557.202.100

BACnet Interface



BACnet can be provided from a stand-alone FireClass panel or from an FireClass network via the BACnet converter.

The BACnet converter is a mini RISC-based embedded computer which converts fire data to the BACnet communications protocol. The converter needs special firmware that is simply uploaded from a PC.

Product Order Codes

BACnet interface 557.202.135

Network Card EN54 Approved

Network Interface Module



The use of the FireClass Network allows the fragmentation of a number of fire controllers to be drawn into a network system.

The FireClass Net communications network comprises a collection of network interface modules and peripheral equipment that together form a fault resistant, and flexible peer-to-peer network for the FireClass Digital addressable fire systems controllers.

Product Order Codes

TLI800EN 557.202.080



Network Interface Module with PSU



The use of the FireClass Network allows the fragmentation of a number of fire controllers to be drawn into a network system.

The FireClass Net communications network comprises a collection of network interface modules and peripheral equipment that together form a fault resistant, and flexible peer-to-peer network for the FireClass Digital addressable fire systems controllers.

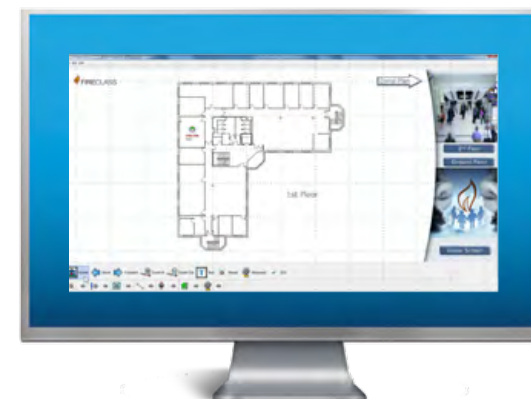
Provided boxed complete with PSU.

Product Order Codes

TLI800EN with PSU 557.200.039



FireClass Graphics Software



General Information

FireClass Graphics is a new client/server emergency management system and fire detection graphical user interface designed for use with the FC32, 64 and 240 control panels.

FireClass Graphics is a Windows-based graphical interface with a high resolution colour display and provides annunciation and status of the complete FireClass detection system using the latest FireClass digital technology and helps monitor and manage an emergency in the event a fire is detected.



General Features

- Real Time visualization of control panel, loop and zone status
- Multi-level maps based on tree structure
- Access device data from any page of the map
- Supports standard PC image file (i.e. gif, jpg, bmp)

Single Panel License Including Dongle and Software



This piece of fire detection equipment from FireClass comes complete with the FireClass Graphics fire management software and dongle which is compatible for one fire alarm panel and provides one license for use on a server. This ensures FireClass customers have everything they require "straight out-of-the-box".

Product Order Codes

FCG-001 557.202.721



Graphics Software

1-4 Panels License Including Dongle, Software, TLI800EN and PSU



This piece of fire detection equipment from FireClass comes complete with the FireClass Graphics fire management software which is compatible for between one and four fire alarm panels, the network card TLI800EN, which links all fire controllers together and a power supply unit. This ensures FireClass customers have everything they require “straight out-of-the-box”.

Product Order Codes

FCG-002 557.202.722



1-10 Panels License Including Dongle, Software, TLI800EN and PSU



This piece of fire detection equipment from FireClass comes complete with the FireClass Graphics fire management software which is compatible for between one and ten fire alarm panels, the network card TLI800EN, which links all fire controllers together and a power supply unit. This ensures FireClass customers have everything they require “straight out-of-the-box”.

Product Order Codes

FCG-003 557.202.723



1-24 Panels License Including Dongle, Software, TLI800EN and PSU



This piece of fire detection equipment from FireClass comes complete with the FireClass Graphics fire management software which is compatible for between one and twenty four fire alarm panels, the network card TLI800EN, which links all fire controllers together and a power supply unit.

Product Order Codes

FCG-004 557.202.724



Additional Client Licenses



Additional client license for the FireClass Graphics Emergency Fire Management System. Maximum number of additional client supported is 2.

Product Order Codes

FCG-005 557.202.725





Product Order Codes

2603011	Semi Flush Bezel FC32 Panel and Repeater Polished Stainelss Steel
2603005	Semi Flush Bezel FC64 and FC240 Polished Stainless Steel
2603013	Semi Flush Bezel FC64RD and FC240RD Polished Stainless Steel
2603078	Fully Flush Bezel FC32 and FC32RA Polished Stainless Steel
2603081	Fully Flush Bezel FC64,FC240, FC64RA, FC240RA Polished Stainless Steel
2603084	Fully Flush Bezel FC64RD and FC240RD Polished Stainless Steel
557.202.000	Motherboard for Fireclass FC32 panel
557.202.001	Motherboard for Fireclass FC64 and FC240 panel
508.032.718	Display board FC32 panel and repeater
508.032.719	Display board FC64 panels and repeaters
508.032.720	Display board FC240 panel and repeater
2000682	Lock and barrel for FC addressable panels
2000857	Bag with installation accessories (Fixing Kit) for Fireclass FC32/64/240 panels
2000859	Bag with installation accessories (Fixing Kit)Fireclass FC64 AC Repeater
2000955	Bag with installation accessories (Fixing Kit)Fireclass FC64 AC Repeater
557.202.611	PMM805, 5 V PSU [5V regulated supply - DC repeater]
557.202.612	PMM840, 40 V PSU [40V regulated loop supply – loop 3 and 4 expansion]
557.202.608	PMM800 Power Monitor Module
557.180.052	Serial printer driver kit
557.180.053	Isolated RS485 IC [for U16]
557.202.118	Download cable for FireClass panels and FireClass express

FC460 Series Detectors



General Information

The FC460 range of detectors use the FireClass digital protocol to provide robust and reliable communications to the control panel. A wide range of cable types can be used and the open topology capability of the system makes it ideal for the upgrade of older systems whilst reusing the cables to reduce cost.

FireClass FC460 detectors provide the best in class environmental and detection performance with the capability of detecting all fire types. The range includes an Optical/Heat Multisensor and Optical/Heat/CO Triple Multisensor.

Automatic self testing of each sensor element offers reassurance of operation at all times and the 360° alarm, isolated and fault LED on each detector provides instant line of sight. Fourteen EN54 approved modes/sensitivities for the Optical/Heat Multisensor help to provide one of the best and most versatile detectors on the market.

General Features

- Multiple fire detection modes.
- FireClass detection algorithms.
- CO fire detection technology.
- Up to 250 detectors per loop.
- Optional bi-directional line isolation.
- Remote detector verification & temperature read out.
- Highly featured service tool.
- Programmable alarm LED with 360° viewing angle.
- Optional detector locking pin.
- Variety of sounder and relay detector base.
- Internationally approved.



Detectors

Combined Optical and Heat Detector



With its ability to detect a wide range of fires, from flaming to smouldering types, the combined optical and heat multi-sensor detector is the preferred choice for a range of applications including light industrial, retail and office environments. It operates in a number of approved modes and sensitivities that can be dynamically selected to suit different environmental conditions.

Product Order Codes

FC460PH 516.460.501



Optical Detector



More benign environments where any potential fire will be slow burning can be protected using the optical detector. A choice of sensitivities gives this detector a broad range of applications.

Product Order Codes

FC460P 516.460.502



Heat Detector



Complimenting the range is the heat sensor which can operate in fixed temperature and rate-of-rise modes. It is most often used in areas where high levels of dust are present or where the environment precludes the use of smoke detectors.

Product Order Codes

FC460H 516.800.503



Smoke, Heat and CO Detector



General Features

For life protection and when the environmental conditions are challenging, the multisensor smoke, heat and CO detector provides the ultimate in detector performance. It uses the three sensor elements in concert to accurately determine the presence of fire with false alarm rejection properties that make it the ideal choice for hotel bedrooms where steam from bathrooms is a common source of false alarms.

Product Order Codes

FC460PC 516.800.504



CO and Heat Detector



General Features

The FC400CH is designed to transmit, to a FireClass 500 control panel, digital signals which represent status of the carbon monoxide and heat elements of the detector.

Not compatible with FC32, FC64 and FC240.

Product Order Codes

FC400CH 516.800.701



Detector Base



The new 4B 4" Detector Base is designed to snap-fit to the Ceiling Tile Adaptor or it can be screw fixed to a ceiling in the traditional manner.

General Features

- Aesthetically discreet.
- Superior performance and reliability.
- Designed for rapid installation.
- Remote LED connection.

Product Order Codes

4B 517.050.041



Isolator Base



The 4B-I 4" Isolator base is designed to snap-fit to the ceiling tile adaptor or it can screw fix to a ceiling in the traditional manner. The 4B-I 4" base is designed specifically for use with the FC460 series detectors and provides protection against short circuit faults on the digital addressable loop.

General Features

- Drives a remote indicator.
- Detector locking pin provided with every base.
- Snap fits to the Time Saver Ceiling Tile Adaptor.
- Temporary park position.

Product Order Codes

4B-I 517.050.043





Detector Bases

Deck Head Mounting



Where the detectors are mounted in humid and environmentally challenging situations such as marine or offshore installations, the 4B-DHM deck head mount provides a sealed waterproof mounting which protects the electrical connections in the base. Can be screwed, bolted / welded to the deck head. Supplied with 1 terminal. If more are required, use the optional base accessory.

General Features

- 4 x 20mm gland entries.
- Fits ALL 5" bases.
- IP55 with supplied gasket.

Product Order Codes

4B-DHM 517.050.051



Euro Mount



The euro-mounting base provides a matching back box, which allows the 5" bases to be ceiling mounted with conduit entries for standard 18 and 21mm conduit.

General Features

- 2 x 18mm conduit entries.
- 2 x 21mm conduit entries.
- Fits all 4" bases.
- Accepts up to 8 accessory terminals.
- Base Accessory terminal kit (pack of 10) part number 517.050.612.

Product Order Codes

4B-EM 517.050.052



Remote Indicators



Remote Indicators

Remote LED Indicator



The 801RIL Remote Indicator is used where a detector LED is not visible i.e., when the detector is mounted in a roof void, lift shaft etc.

All detector bases have the ability to drive a remote LED in the event that the installed position of the detector is not easily visible.

Product Order Codes

801RIL 516.800.908

Remote LED Indicator



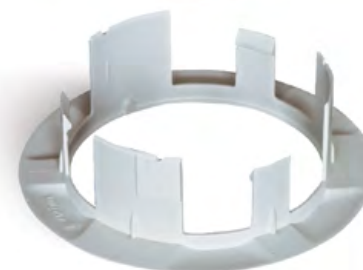
The 801HL Remote Indicator is used where a detector LED is not visible i.e., when the detector is mounted in a roof void, lift shaft etc.

The 800HL remote indicator lamp provides a larger indicator for use in place of the RIL when longer distances are involved or in VdS influenced markets. Typically used to indicate the source of an alarm in buildings with long corridors eg. hotels, hospitals, apartments.

Product Order Codes

801HL 516.800.909

Ceiling Tile Adapter Kit



The Time Saver Ceiling Tile Adaptor is used with the 4B 4" detector base snap fit base and consists of three parts, a bezel and clamp that are fitted to the ceiling tile and a back-box that carries the detector and base assembly. Requires a 127mm diameter hole. The CTA adaptor plate allows this to be used with other devices such as the FC430SB.

General Features

- Cuts installation time by 30%.
- Commission the system before the suspended ceiling is installed.
- Suitable for ceiling tiles from 1mm.
- Made from flame retardant material.
- No additional back-box is required.
- Time saver is designed for use with a new snap-fit 4" detector base
- Adaptor available for use with the AV base & other devices.

Product Order Codes

CTA-BB CTA Back Box	517.050.056
CTA-BC CTA Bezel and Clamp Kit	517.050.057
	517.050.060





Addressable CallPoint with Isolator



General Information

A comprehensive range of call points for use with FireClass addressable systems, using the robust and reliable FireClass open protocol. All the callpoints are designed to enable an alarm signal to be given by a plastic resettable element, which means that the call point can be easily reset after it has been activated. Any change in the status of the switch is immediately communicated to the FireClass Control and Indicating Equipment (CIE). All call points have an integral short-circuit isolator for monitoring the addressable loop wiring.

The integral LED indicator is normally off. When the frangible element is broken, an alarm is registered and the LED will illuminate red. If a section of the loop wiring adjacent to the call point is shorted, the built-in short-circuit isolator trips, isolating the shorted section and the LED is illuminated yellow. The status remains until the short is removed. If required, an optional transparent hinged cover may be installed to guard against accidental operation. Both indoor and outdoor versions are available.

General Features

- Integral short circuit isolator.
- Dual colour LED indication.
- EN54-11 certification.
- Compact, modern styling.
- Test key for fast testing.
- IP67 ingress protection models for external applications.

Addressable Indoor Callpoint with Isolator



FC420CP-I Addressable Indoor Callpoint is designed to monitor and signal the condition of a switch contact that is operated by activating the deformable plastic element. A short circuit isolator is embedded.

Product Order Codes

FC420CP-I Indoor Callpoint with isolator - no Back Box 514.800.805

Callpoints

Addressable Outdoor Callpoint with Isolator



FC421CP-I Addressable Break Glass Callpoint is designed to monitor and signal the condition of a switch contact that is operated by activating the deformable plastic element. The FC421CP-I is fitted into a standard weatherproof callpoint housing. IP67 protection degree.

A short circuit isolator is embedded.

Product Order Codes

FC421CP-I Outdoor Callpoint with Isolator 514.800.806



Mount Back Box



Mount Back Box for FC420CP-I with terminals.

Product Order Codes

FC420CPB 10-115

Standard Back box for Manual Call Point



Standard red surface mounting Back Box for FC420CP-I.

Product Order Codes

Standard Back box for manual call point 515.001.021

Spare Glasses for Manual Call Point (Pack of 5)



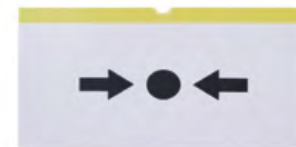
General Features

EN54 Part 11 Spare Glass for MCP and CP series Callpoints (Pack of 5).

Product Order Codes

Spare Glasses for Manual Call Point 515.001.119

Deformable FC400 MCP Element



General Features

Deformable operating unit "glass" for use in place of glasses, for kitchens or other areas where glass is not acceptable.

Product Order Codes

Deformable FC400 MCP element 515.001.127

Manual Call Point Plastic Hinged Cover



General Features

Callpoint hinged cover for use with MCP call points models (Colour -Clear).

Product Order Codes

Plastic Hinged Cover 515.001.128

Spare Manual Call Point Keys (Pack of 10)



General Features

Test key for all MCP and CP style call points.

Product Order Codes

Spare Manual Call Point Keys 515.001.045



Addressable Detector Sounder Bases



General Information

The FireClass range of addressable detector bases and base ancillaries have been designed with the needs of both the installer and end user in mind. The range includes standard and isolator bases, sounder and sounder/beacon bases as well as the unique time saver ceiling tile adaptor.

The addressable sounder base and sounder/beacon base feature built-in line isolators, flash rate, tone and volume settings via the panel configuration software which means that either individual, zonal or global changes can be made with a single panel configuration download. Sounder and beacon can be programmed separately.

Many of today's buildings feature a false or suspended ceiling. Installation of fire detectors to this type of ceiling has been seen as both difficult and time consuming with the installation requiring the ceiling to be in place before the detector base and associated second fix can take place. By using the new Time Saver Ceiling Tile Adaptor the whole installation process has been made much easier.

General Features

- Aesthetically discreet.
- Superior performance and reliability.
- Designed for rapid installation with a Snap-Fit feature.
- Remote LED connection.
- Addressable loop powered sounder and sounder/beacon bases with built-in line isolators.
- Time saver ceiling tile adaptor reduces installation time on suspended ceilings by 30%.

Sounder Base



The FC430SB Loop Power Sounder Base provides an additional sounder function on the FireClass panels.

The FC430SB Loop Powered Sounder Base requires an associated FC460 series detector in order to operate, as it uses the address of the detector or the module that is fitted to it.

Product Order Codes

FC430SB 516.800.710

Sounder Bases

Addressable Sounder Base



The FireClass loop powered addressable sounder base FC430LPSB offers a remarkable saving in terms of installation time and costs. Fire alarm sounder bases such as the FC430LPSB actually provide 3 functions.

Not only do they provide a base for a fire or smoke detector, they have an inbuilt fire alarm sounder and an isolator which is inbuilt into the fire alarm sounder base, after alarm activation.

Product Order Codes

FC430LPSB 516.800.757

Addressable Sounder/Beacon Base



The FC430LPASB is an addressable loop powered fire sounder and beacon base for smoke detectors. The FireClass loop powered addressable fire alarm sounder and beacon base FC430LPASB offers incredible savings in respect of both installation time and costs.

Product Order Codes

FC430LPASB 516.800.758

Addressable Open Class Sounder/Beacon Base



The FC430LPBSB is an addressable loop powered fire sounder and beacon base for smoke detectors. It is approved to EN54-23 and EN54-23 under Open Class category. The FireClass loop powered addressable fire alarm sounder and beacon base FC430LPBSB offers incredible savings in respect of both installation time and costs.

Product Order Codes

FC430LPBSB 516.800.973

Sounders and Sounder/ Beacon



Sounders and Sounder/ Beacon



General Information

A range of FireClass sounders to meet a wide variety of alarm applications where loud, penetrating and distinctive warnings must be given to alert people of fire situations. In addition, multitone electronic sounders can give a variety of sounds to signal other conditions e.g. "extinguishing gas release imminent".

The addressable loop powered sounders meet the requirements of EN54 part 3 whilst the loop powered addressable sounders with beacon are also approved to EN54 part 23 as open category devices.

A high (103dB) output or low (90dB) output can be selected for any of the 16 selectable tones. The high brightness LED beacon provides a 2 candela output with adjustable flash rate. Tone, volume and flash rate can be set via software, without having access to the sounder location.

An internal line isolator automatically provides shortcircuit protection against cable faults thus reducing the need for additional line isolator modules.

General Features

- High sound output characteristics.
- Low current consumption.
- High Brightness LED Beacon.
- Clean lines, modern styling.
- Easy to install, low installation costs.
- Weatherproof units for outdoor use.
- Multiple tones and flash rate to suit individual requirements.
- Integral line isolator.
- 16 Tones.
- 2 Flash Rates.
- Visual alarm approved to EN54-23 open category.
- Audible alarm approved to EN54-3.

Open Class Addressable Sounder/Beacon



FC410LPBS-R is a red indoor loop powered addressable sounder and beacon approved to EN54-3 and EN54-23 under the Open Class category. It provides a solution to the increasing need to incorporate visual alarms as well as sounders into fire systems.

Product Order Codes

FC410LPBS-R 516.800.970

Open Class Addressable Sounder/Beacon Indoor



FC410LPBS-W is a white indoor loop powered addressable sounder and beacon approved to EN54-3 and EN54-23 under the Open Class category. It provides a solution to the increasing need to incorporate visual alarms as well as sounders into fire systems.

Product Order Codes

FC410LPBS-W 516.800.971

Open Class Addressable Sounder/Beacon Outdoor



FC410LPBS is a red outdoor loop powered addressable sounder and beacon approved to EN54-3 and EN54-23 under the Open Class category. It provides a solution to the increasing need to incorporate visual alarms as well as sounders into fire systems. IP65

Product Order Codes

FC410LPBS 516.800.972



Sounders and Sounder/ Beacon

Addressable Sounder with Visual Indication Indoor



FC410LPAVR is a red outdoor loop powered addressable sounder with an additional visual indication. It provides a solution to the increasing need to incorporate visual confirmation of alarms into fire systems.

Product Order Codes

FC410LPAVR 516.800.763

Addressable Sounder with Visual Indication Indoor



FC410LPAVR is a white indoor loop powered addressable sounder with an additional visual indication. It provides a solution to the increasing need to incorporate visual confirmation of alarms into fire systems.

Product Order Codes

FC410LPAVV 516.800.764

Addressable Sounder with Visual Indication Outdoor



FC410LPAVR is a red outdoor loop powered addressable sounder with an additional visual indication. It provides a solution to the increasing need to incorporate visual confirmation of alarms into fire systems.

Product Order Codes

FC410LPAVV 516.800.764



Addressable Sounder Indoor



FC410LPSYR is a red indoor loop powered addressable equipped with an embedded isolator.

Product Order Codes

FC410LPSYR 516.800.760

Addressable Sounder Indoor



General Features

FC410LPSYR is a white indoor loop powered addressable equipped with an embedded isolator.

Product Order Codes

FC410LPSYW 516.800.761

Addressable Sounder Outdoor



General Features

FC410LPSY is a red outdoor loop powered addressable equipped with an embedded isolator.

Product Order Codes

FC410LPSY 516.800.762



Mini Input Module



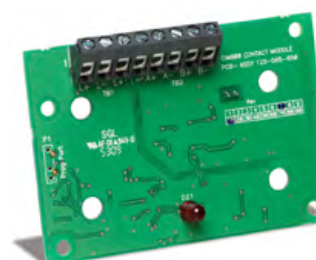
The FC410MIM Mini Input module is designed to monitor fire contacts, such as extinguishing system control, ventilation control, fire door control etc. The module provides one identifiable detection spur which is capable of monitoring multiple normally open contacts or a single normally closed contact.

The FC410MIM can be mounted in any electrical enclosure with sufficient depth to accommodate FC410MIM and the contacts monitored by the IN+ and IN- terminals, ie, no field wiring. The remote LED (if required, not supplied) must be located within the same electrical enclosure.

Product Order Codes

FC410MIM 555.800.701

Contact Input Module



The FC410CIM FC Addressable Contact Input Module is designed to monitor fire contacts such as extinguishing system control, ventilation control, fire door control etc. The FC410CIM can be configured as:

Two spur circuits monitoring multiple normally open contacts, with short circuit giving a fault output.

Two spur circuits monitoring single normally closed contacts, with short circuit giving a fault output.

Product Order Codes

FC410CIM 555.800.702

Gas & Detection Module Indoor



The FC410DDM provides the ability to connect and interface 2 conventional zones, to the FireClass fire alarm controller.

The FC410DDM monitors the status of the detectors and the wiring to the detectors and signals detector and wiring status back to the controller.

The conventional detector circuits can be configured as one Class A circuit (loop) or two Class B spur circuits. The FC410DDM can be either loop powered or driven from a local 24Vdc supply.

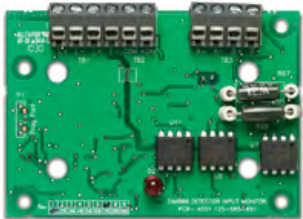
It also provides the ability to connect 2 gas detectors (supported by FC500 series panels only).

Product Order Codes

FC410DDM 577.800.706

Loop modules

Detector Input Module



The Addressable FC410DIM provides the ability to connect and Interface one zone of conventional detectors (non-addressable) to the Fire Alarm Controller. The FC410DIM monitors the status of detectors and wiring to detectors and signals detector and wiring status back to the Controller. The FC410DIM requires a 24Vdc power supply.

Product Order Codes

FC410DIM 555.800.712

Beam Detector Interface Module



The FC410BDM Beam Detector Interface Module is designed to power and interface one FIRERAY 50/100/3000/5000 Beam Detector to the FireClass Digital Addressable Loop.

The FC410BDM monitors the Fire and Fault contacts and also monitors for open and short circuits on the connections between the interface and the beam detector. For remote siting of the FIRERAY detector an optional BTM800 Terminal Module can be used.

Product Order Codes

FC410BDM 555.800.766



Beam Detector Module



In many cases it will be necessary to site the FC410BDM Beam Detector Module some distance from the beam detector itself. To minimize and simplify wiring in such cases an optional unit, the BTM800 beam termination module is available.

The BTM800 is also housed in a standard double gang ancillary cover and has all the connections and components required to minimize installation time.

Product Order Codes

BTM800 555.800.067



Relay Interface Module



The FC410RIM Relay Interface Module provides one volt-free relay changeover contact on a latching relay. The relay is controlled by a command sent from the FireClass fire controller via the addressable loop.

The relay state (activated, deactivated or stuck) is returned to the controller as confirmation.

Product Order Codes

FC410RIM 568.800.703

Sounder Notification Module



The FC410SNM Sounder Notification Module is designed to provide an output, in response to a command signaled from a controller, to activate a number of polarized and suppressed sounders. The sounders are powered from an independent power supply and the module is capable of passing up to a maximum of 2A (e.g., 24V dc 50mA company sounders or a mixture of different current rated sounders not exceeding a maximum current of 2A).

Product Order Codes

FC410SNM 577.800.705

Sounder Booster Module



The SB520 sounder booster module enables the FC410SNM to drive circuits with higher currents whilst maintaining the reverse polarity integrity line monitoring. It is non-addressable and requires a local 24 V DC supply to drive a single circuit of polarized and suppressed sounders.

Product Order Codes

SB520 577.001.023

Loop Modules

High Voltage Relay Interface



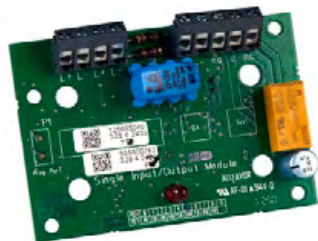
The HVR800 High Voltage Relay Interface is a non-addressable multi-voltage relay module (operating from 24V DC, 24V AC, 120V ac and 240V AC). The encapsulated HVR800 provides a 10 amp volt-free contact that can be used to extend the contact ratings of FC410RIM Addressable Relay Module applications.

A maximum of four HVR800s can be individually driven and controlled by an FC410MIO Small Addressable Multi-Input/Output module if all HVR800s are powered by 120V ac or 240V AC. For ac operation, no external dc power supply unit is required to operate the relay. When used to switch 24V DC, the HVR800 must be provided with an external 24V DC supply which should be switched through the clean relay contacts of an FC410MIO or FC410RIM.

Product Order Codes

HVR800 568.800.004

Single Input/Output Module



The FC410SIO Single Input/Output Module is designed to provide a monitored open collector input and a volt free relay changeover output. FC410SIO can switch up to 2 A @ 24 VDC.

Product Order Codes

FC410SIO 555.800.763

Multi I/O Module

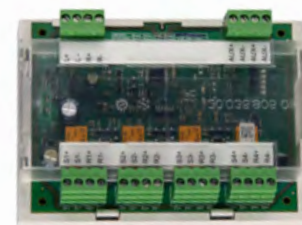


The FC410MIO Multi I/O Module has three inputs and two outputs from latching relays. The inputs can monitor fire contacts such as extinguishing system control, ventilation control, fire door control etc. The two relays outputs provide volt-free relay changeover contacts.

Product Order Codes

FC410MIO 555.800.765

Quad Monitored Output Module



The FC410QMO comprises of four monitored relay outputs that are suitable for 24Vdc sounders. The outputs are monitored for short and open circuit faults.

Product Order Codes

FC410QMO 555.800.770

Quad Input/Output Module



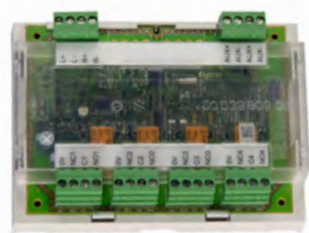
The FC410QIO Quad Input/Output Module is designed to provide four monitored digital inputs and four potential free relay changeover outputs. The outputs can be connected to an Auxiliary Voltage source and its voltage can be monitored. The FC410QIO has an integral FireClass loop isolator. When a section of the loop adjacent is shorted, the isolator trips, isolating the shorted section, then the yellow LED illuminates. This status remains until the short is removed. The FC410QIO must be fitted in a control enclosure or any distributor enclosure. The FC410QIO will be preferably mounted via a DIN rail. Alternatively, it can be directly fixed on the rear side of the enclosure. The digital input monitoring and isolator functions are both configurable. Furthermore, all outputs can be connected to the HVR800 which allows switching to high power galvanic isolated loads.

Product Order Codes

FC410QIO 555.800.771

Ancillary Loop Modules Housing

Quad Relay Module



The FC410QRM Quad Relay Module is designed to provide four potential free relay changeover outputs. The outputs are monitored with parallel contacts of the relays. The outputs can be connected to an Auxiliary Voltage source and its voltage can be monitored. The FC410QRM has an integral FireClass loop isolator. When a section of the loop adjacent is shorted, the isolator trips, isolating the shorted section, and illuminating a yellow LED. This status remains until the short is removed.

The FC410QRM must be fitted in a control enclosure or any distributor enclosure. The FC410QRM will preferably be mounted via a DIN rail. Alternatively, it can be directly fixed on the rear side of the enclosure. Furthermore, all outputs are configurable to the HVR - mode (High Voltage Relay), which allows connection of up to four HVR800 modules for switching e.g. 240V loads galvanic isolated.

Product Order Codes

FC410QRM 555.800.773

Line Isolator Module



The FC410LI Line Isolator Module is designed to be used on the FireClass addressable controller loop. It monitors the line condition and when detecting a short circuit will isolate the affected section whilst allowing the rest of the loop to function normally. The purpose of the FC410LI Line Isolator Module is to ensure that, on a looped addressable system, no short circuit fault can disable more detection devices than would be lost on a conventional non-addressable fire circuit.

Product Order Codes

FC410LI 545.800.704

Door Control Module



When activated, either by a fire signal or by a fault or isolation within the fire door zone, the FC410TSM will interrupt the supply to the door holders and the doors under control of the module will close. The module has the provision to monitor a contact to report to the fire controller if the door fails to close. The module also includes a built-in line isolator.

Product Order Codes

FC410TSM 555.800.769

FireClass Housings



FireClass Housings

FireClass Housings



FireClass ANC Ancillary Housing are metal enclosures that can fit FireClass addressable panel expansions and loop ancillary modules. They are available in different sizes, with blank doors and with one or two cutouts.

Product Order Codes

557.202.701	FireClass ANC 1 Ancillary / Document Housing [Blank door]
557.202.702	FireClass ANC 2 Ancillary / Document Housing [Blank door]
557.202.703	FireClass ANC 3 Ancillary / Document Housing [Blank door]
557.202.704	FireClass ANC1-D Ancillary / Document Housing [1 x cut out door]
557.202.705	FireClass ANC 2 -D Ancillary / Document Housing [2 x cut out door]
557.202.706	FireClass ANC 3 -D Ancillary / Document Housing [2 x cut out door]

IP66 Enclosure with DIN Rail for QUAD Modules



A polystyrene/polycarbonate IP66 rated housing prefitted with a DIN rail for mounting either 1 x Quad Input/Output Module (FC410QIO), or 1 x Quad Monitored Output Module (FC410QMO) or 1 x Quad Relay Output Module (FC410QRM) complete with a transparent front cover.

Product Order Codes

557.201.410	IP66 Enclosure with DIN Rail for QUAD Modules
--------------------	---



Ancillary Module Housing



FC800 IP65 ancillary housing 140W x 120H x 70D mm incorporates window to view module LED.

Product Order Codes

FCD800 IP65	557.201.401
--------------------	-------------



Ancillary Loop Modules Housing

Ancillary Cover for Use with Modules



Ancillary cover for use with FC410 series modules. Will fit onto a MK style double gang back box.

Product Order Codes

FC470CV	517.035.007
----------------	-------------

White D/Gang B/Box

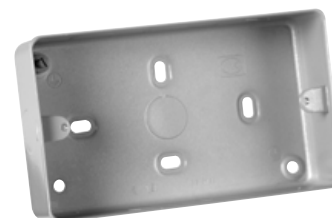


FC470DGB White plastic surface mount MK backbox for use with 800 Series addressable ancillaries using 517.035.007 cover.

Product Order Codes

FC470DGB	517.035.010
-----------------	-------------

B Metal D/Gang B/Box



FC470MDGB Metal surface mount MK backbox for use with FC410 Series addressable ancillaries using 517.035.007 cover.

Product Order Codes

FC470MDG	517.035.011
-----------------	-------------



Ancillary Loop Modules Housing

Dry Line B/Box



FC470DLB Dry lining flush mount (for plasterboard etc) MK backbox for use with FC410 Series addressable ancillaries using 517.035.007 cover.

Product Order Codes

FC470DLB 517.035.015

DIN Rail Mounting Kit for FC410MIO



Used to mount a FC410MIO module on a DIN rail.

Product Order Codes

557.201.303 DIN Rail Mounting Kit

Steel D/Gang B/Box.



FC470FMB steel flush mount MK backbox for use with FC410 Series addressable ancillaries using 517.035.007 cover.

Product Order Codes

FC470FMB 517.035.014

Loop modules

DIN Rail Mounting Bracket



DIN rail mounting bracket enables any module which can be mounted to a FC470CV ancillary cover to be DIN rail mounted using this bracket.

Clip-on PCB mounting pillars are included. Will fit standard 35 mm DIN Rail bracket.

Product Order Codes

547.004.002 DIN Rail Bracket to Mount Ancillary Modules to 35mm DIN Rail.

490ST Service and Programming Tool



Service and Programming Tool



General Information

The FireClass Addressable Ancillary Smoke Detector Programmer Address Loop Service Tool FC490ST is a powerful and flexible loop service tool for assistance in smoke detector and ancillaries' installation, commissioning, diagnostics and service of FireClass fire detection systems.

The addressable detector programming tool allows all the addressable smoke detector and ancillaries to be interrogated, tested and programmed. Suitable for desktop or single handed operation the FireClass Addressable Service Tool FC490ST tool is battery operated using standard rechargeable batteries.

General Features

- Read/Write the detector/ancillary address.
- Display temperature/CO levels and smoke obscuration.
- Programming of the LED.
- Testing the detector remote LED and control outputs.
- Perform the detector self verification test function.
- Display detector contamination level.
- Controlling ancillary outputs.
- Reading ancillary status.
- Power management options.

Product Order Codes

516.460.490	Hand held Service and Programming Tool
517.050.015	Volume Adjustment Tool
516.800.923	Service accessory kit – FC branded.
516.800.922	Auxiliary programming cable FC490ST
516.800.924	Spare pin for FC490ST programming cable (10 pcs)

Air Sampling Unit and Accessories



Air Sampling Unit



General Information

The ICAM Air Sampling Smoke Detection System provides a flexible solution to meet the unique needs of numerous applications including industrial spaces such as cable tunnels, tamper proof and unobtrusive requirements for special accommodation, or can simply be used to replace detectors in office environments.

The ICAM system actively draws air from the protected area through sampling holes in a pipe network. Sampled air is then filtered before being analyzed by up to two FC460 Series detectors.

The ICAM system is available in two configurations:
IAS460 twin inlet pipe configuration, which can be fitted with two detectors for monitoring one or two pipe runs.

IAS461 single inlet pipe configuration, which can be fitted with one detector.
The system utilizes a high performance aspirator and software configurable flow monitoring circuitry.

The air flow level is displayed on a ten element bar graph that can be adjusted for high and low flow thresholds, and flow failure is reported as a device fault.

General Features

- Ideal for areas where access is restricted, harsh environments and areas where a point detector would be damaged.
- Powerful fan.
- Up to two 100m pipe runs available.
- Pipes can be individually monitored for air flow with LED bar graph.
- FireClass loop and 24Vdc connections.
- Fault monitored via the FireClass loop.
- IP65 enclosure.
- Field serviceable air filters.
- Uses standard 25mm VESDA pipe and fittings.

Product Order Codes

- 516.016.402** ICAM IAS460 Aspirated Smoke Dual
Detector common fault monitor
- 516.016.401** ICAM IAS461 Aspirated Smoke Single Detector common fault monitor
- 516.016.303** ICAM Course Filter (Per Pack of 10)

Air Sampling Unit and Accessories

VESDA VLQ-100 Aspirated Smoke Detector and accessories



General Information

The VESDA VLQ detector is a cost-effective Aspirated Smoke Detection (ASD) solution that meets the unique needs of numerous small area applications of up to 100 m² (1,000 ft²).

VLQ detectors are suitable for both high and normal sensitivity applications and offer many installation advantages in terms of out-of-box operation, stand-alone functionality and simplified pipe network.

The VLQ detector actively draws air from the protected area through a pipe network where two or four holes are used. The VLQ has two pipe inlets and there are always one or two holes on each pipe. Sampled air is then filtered before being analyzed by the detection chamber.

The detection chamber utilizes a laser light source and photoelectric receiver circuitry to detect scattered light caused by the presence of smoke. Alarm (Pre-Alarm & Fire) and Fault conditions are reported by activating the corresponding LEDs on the simple display and dry contact relays.

The system allows configuration of both smoke alarm and flow fault thresholds to suit the application needs.

General Features

- Laser-based absolute smoke detection.
- Clean air barrier for optics protection.
- Up to 100m² (1,000 ft²) coverage.
- Up to 2 x 6 m (20 ft) linear or up to 2 x 9 m (30 ft) branched pipe lengths.
- 2 or 4 Class A / VEWFD sampling holes.
- Metric/Imperial pipe inlets.
- Pre-alarm, Alarm and Fault Relays.
- 5 LEDs, Pre-alarm, Fire, Fault, Filter, Power.
- Monitored on-board filter.
- AutoLearn™ Smoke.
- General Purpose Input (GPI).
- IP30 enclosure.
- Xtralis QSC support.
- USB port for PC connection.
- Event log.
- Low power consumption.
- Configuration via DIP switches.
- Various mounting options.
- UL, ULC, ActivFire, CE, LPCB, VNIPO, EN 54-20 (Class A, B & C with 4 holes).



Product Order Codes

VSP-893	Pipe Kit
VLQ-100	VLQ Aspirated Smoke Detector with relays & USB
VSP-890	Surface Mount Kit
VSP-891	Flush Mount Kit
VSP-892	Replacement Filter
VSP-892-20	Replacement Filter - pack of 20

Pipe 25mm Diameter



VESDA aspirating pipes, printed along its length on opposite sides at 450mm intervals. 3 m length pipes. Order in multiples of 10 lengths.

Product Order Codes

516.018.901

Socket 25mm



Straight socket for 25mm pipe. Order in multiples of 10.

Product Order Codes

516.018.902

Socket Union 25mm



Socket union to facilitate servicing of pipework. Order in multiples of 1.

Product Order Codes

516.018.903

Bend 25mm



90 degree Long Radius bend. Order in multiples of 5.

Product Order Codes

516.018.904

Air Sampling Unit and Accessories

Elbow 25mm



45 degree elbow. Order in multiples of 5

Product Order Codes

516.018.905

End Cap 25mm



End cap 25mm. Order in multiples of 5.

Product Order Codes

516.018.906

Equal Tee 25mm



Equal Tee 25mm. Order in multiples of 5.

Product Order Codes

516.018.907

Pipe Clip 25mm



Pipe Clip 25mm. Order in multiples of 10.

Product Order Codes

516.018.908

Socket Adaptor 25mm to 3/4"



Socket adaptor, imperial to metric, to extend existing systems. Order in multiples of 5.

Product Order Codes

516.018.909

Solvent Cement (0.25 L Tin)



Solvent cement.

Product Order Codes

516.018.910

Capillary Tube Conical Sample Point Assembly



Capillary Tube Conical Sample Point Assembly. 25mm socket adaptor + 2m capillary tube (tube colour - red).

Product Order Codes

516.018.911

Capillary Tube Flush Sample Point Assembly



Capillary Tube Conical Sample Point Assembly. 25mm socket adaptor + 2m capillary tube (tube colour - red).

Product Order Codes

516.018.912

Air Sampling Unit and Accessories

Capillary Tube 10mm



Capillary Tube 10mm o/d x 30m length (tube colour - red).

Product Order Codes

516.018.915

Sampling Point Label (1Reel)



Sampling point label. Order in multiples of 100.

Product Order Codes

517.017.005

Pipe Label (1 Reel)



Pipe Label. Order in multiples of 100

Product Order Codes

517.017.006

Pipe Clip 25mm

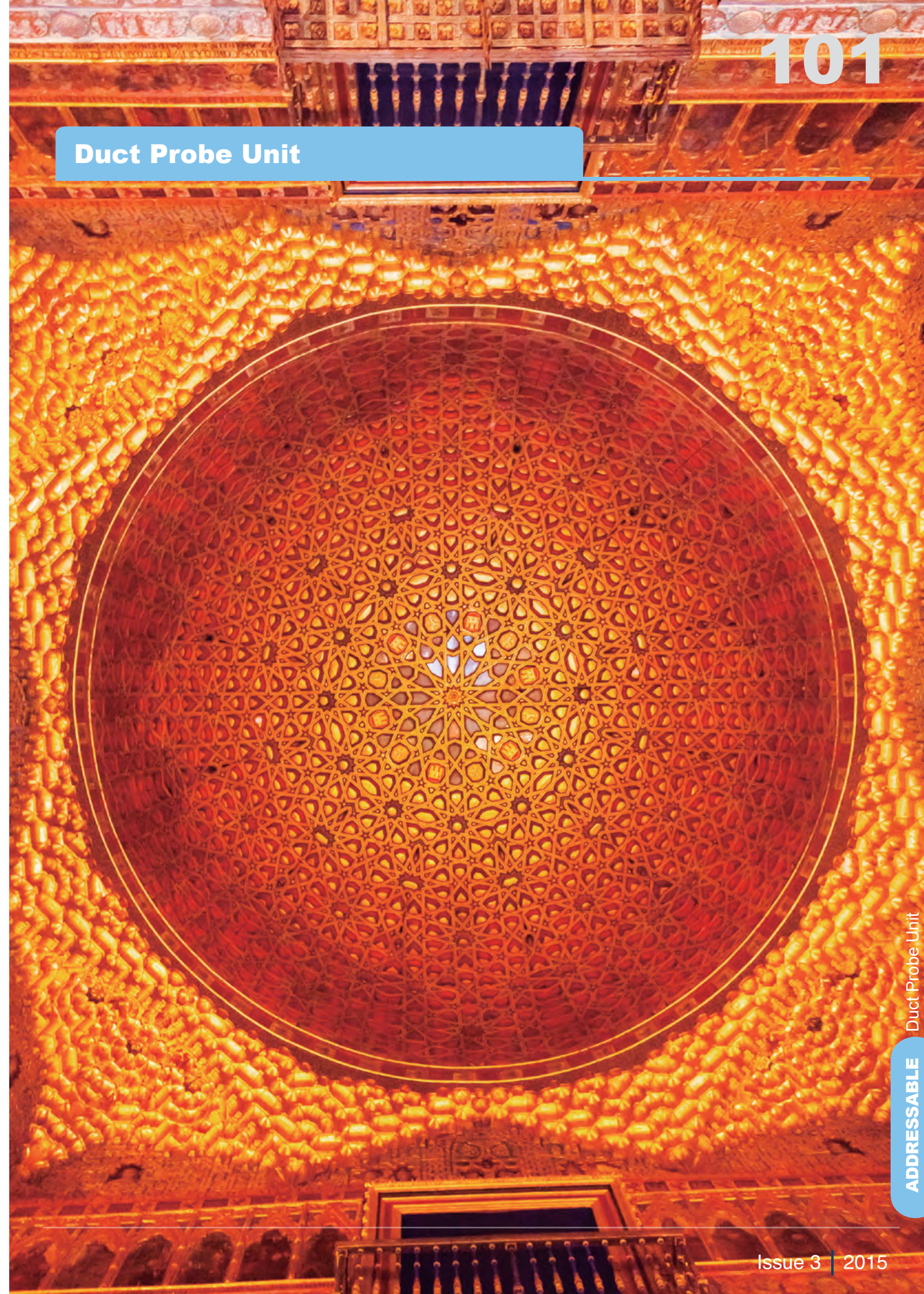


Pipe Clip 25mm. Order in multiples of 10.

Product Order Codes

516.018.908

Duct Probe Unit



Duct Probe Unit

DPK6 Duct Probe with 4B-C 4" Continuity Base



General Information

The DPK6 duct probe units have been developed to detect smoke in ventilation ducts and offer significant benefits in terms of performance and installation. For most applications, smoke or combustion products are likely to have travelled some distance ageing the smoke prior to reaching the probe unit. It is therefore normally recommended that an optical smoke detector be fitted, and this is often a requirement of building regulations. The DPK6 duct probe units use FC460PH Multi Sensor Smoke Detectors.

The DPK6 Duct Probe units are not normally mounted directly inside ducts because the airflow only allows the detector to sample air from a small section of the duct and such detectors would rapidly become dirty. Instead, ducting is protected by the use of probe units which gather air from a cross section of the duct and pass it through a smoke detector head.

The system comprises only one single duct probe tube which improves efficiency and reduces installation time. The DPK6 duct smoke detector housing is designed to comply with the stringent demands of new European standard EN 54-27. The system fulfils all the requirements for safe fire detection with airflow speeds from 1,5 m/s to 20 m/s.

For the airflow through the adaptor to be representative of the airflow in the ventilation duct, the detector should be installed at a place where normally flow meters etc. are sited.

Please see the mounting instructions supplied with the product.

General Features

- DPK6 for use with FC460PH with built-in 4B-C 4" continuity base.
- Designed to comply with EN 54-27.
- One-pipe air sampling system.
- Patented Cap-up Venturi pipe and duct housing.
- Test hole on cover.
- Simple installation.
- Sensitive flow indicator.
- Simple service and maintenance.
- Range of aluminium probe tubes are available for ducts up to 2700 mm.

Product Order Codes

517.025.056	DPK6 Duct Probe with 4B-C 4" Continuity Base
517.025.058	DPK6-60 - Duct Probe Tube 60 cm
517.025.059	DPK6-150 - Duct Probe Tube 150 cm
517.025.060	DPK6-280 - Duct Probe Tube 280 cm
517.025.061	DPK6-MB - Duct Probe Mounting bracket
517.025.055	DPKF – Filter (pack of 10)

Beam Smoke Detectors



Beam Smoke Detectors

Auto Aligning Optical Beam Smoke Detectors



General Information

The FIRERAY 5000 motorised, auto aligning infrared optical beam smoke detector can now be installed with up to four detector heads per system, thus saving on installation time and costs. This innovative system has been designed from the ground up to include pioneering technology that fully addresses the needs of the installer and user, both now and in the future.

Once the detector heads are connected, using the Easifit First Fix system, an integral LASER, which is aligned along the optical path of the beam, can be activated. This allows the reflective prism to be sighted quickly and with confidence. Once the LASER has been used to coarsely align the beam, the Auto-Optimise beam alignment system takes over and automatically steers the beam into the optimum position.

Each detector head is independently configurable from 8m through to 100m and has its own individual fire threshold. The System Controller retains one set of Fire and Fault relays that is common to all detectors that are installed.

The FR5000 MultiHead is supplied with one detector head and reflector for single beam operation from 8 to 50 meters. Up to 3 additional detector heads can be added to the controller to enable larger or more complex areas to be protected (subject to local codes).

General Features

- Motorised auto-aligning.
- Up to 4 detectors per system controller.
- Each detector configurable from 8m to 100m.
- Integral LASER.
- Auto-align fast automatic beam alignment.
- Auto-optimize building movement and contamination compensation.
- Worldwide approvals including EN54:12 and UL268.
- Controller dimensions (WxHxD): 202 x 230 x 81 mm.
- Detector dimensions (WxHxD): 134 x 135 x 134 mm.

Product Order Codes

FIRERAY 5000 516.015.020

FR 5000 Detector Head

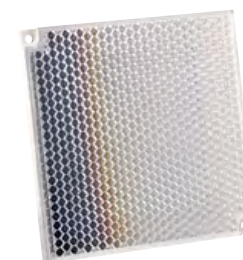


Each detector head is independently configurable from 8m through to 100m and has its own individual fire threshold. The System Controller retains one set of Fire and Fault relays that is common to all detectors that are installed.

Product Order Codes

516.015.021

Reflector



Reflector 100 X 100mm 4 reflectors are required for distances from 50 to 100m.

Product Order Codes

516.015.007

Fireray® 3000 Optical Beam Smoke Detector



General Information

The FIRERAY® 3000 is ideal for applications where line of sight for the IR (infra-red) detection path is narrow and where the building structure uses reflective surfaces. It has also been designed to be aesthetically pleasing and thus can equally suit modern architectural buildings as well as heritage sites, particularly where ornate ceilings exist.

The FIRERAY® 3000 has been designed so that it can be installed by one operator, with its laser assisted alignment method combined with easy to use alignment LED's offering visual feedback. The integrated laser alignment aid can be activated at the controller or at the receiver head.

An additional detector head set (one transmitter & one receiver) can be added to the controller, separate relay contacts are provided for each of the two beam sets.

General Features

- Separate transmitter and receiver heads.
- Range 5 to 120 meters, configurable per set of detectors.
- Integral laser alignment in receiver.
- 2-wire interface between controller and receiver.
- Single and twin detector options.
- Separate fire and fault relays per detector.
- Low level controller with LCD display.
- Programmable sensitivity and fire threshold.
- Automatic gain control (AGC) for drift compensation.
- First fix concept for transmitter, receiver and controller.

Product Order Codes

516.015.030

Beam Smoke Detectors

FireRay® 3000 Extra Beam Set



Extra beam set for use with the Fireray® 3000.

Product Order Codes

516.015.031

FireRay® 3000 Adjustable Bracket



Adjustable bracket for use with the Fireray® 3000 heads or Fireray 5000 head.

Product Order Codes

3000-201

Fireray® 50 / 100 Optical Beam Smoke Detectors



The Fireray® 50 and Fireray® 100 are comprised of two base elements i.e. a combined infra-red transmitter and receiver in a common housing and a reflective prism. The electronics of the combined transmitter and receiver unit analyze the reflected beam from the prism for smoke and generates an alarm condition if a pre determined level is reached.

Product Order Codes

516.015.011 Fireray® 50
516.015.012 Fireray® 100

Optical Beam Smoke Detector Mounting Accessories





Optical Beam Smoke Detector Mounting Accessories

Universal Mounting Bracket



The Universal Mounting Bracket can be used with the Fireray 5000 detector head and the 1 or 4 way prism plates to enable the detector head or prism plates to be easily mounted and adjusted when fixing to angled walls or cladding.

Product Order Codes

5000-005

Flat Mounting Plate for 1 to 4 Prisms



The Flat Mounting Plate is a metal plate which will support a single prism or 4 prisms, the side mounting holes are compatible with Unistrut® racking systems.

Product Order Codes

5000-006

Prism Mounting Plate for 4 Prisms



The large prism plate will securely mount 4 prisms and is designed to be used in conjunction with the Universal Mounting Bracket (not included).

Product Order Codes

5000-007

Prism Mounting Plate for 4 Prisms



The small prism plate will securely mount a single prism and is designed to be used in conjunction with the Universal Mounting Bracket (not included).

Product Order Codes

5000-008

Conventional Range





Comprehensive Range

The FireClass conventional range offers the user a choice of control panel widely known and used throughout the world, ranging from the basic J408-2 2 zone panel up to the expandable J424-8 24 zones panel. All panels can be fitted with 1 or 2 optional extinguishment modules and are designed to provide ease of installation by allowing most of the conventional detectors to be connected to each zone.

The conventional control panel range is also complemented by the FireClass Prescient III Extinguishing Panel designed to provide ease of installation by allowing most industry conventional detectors to be connected to each zone.

Easy to Install

All FireClass conventional panels offer a user friendly, out-of-the-box feel.

Both the J408 and J424 are easy to install and can be configured from PC or keypad.

The Prescient III is supplied in a robust metal housing, but still offers a chassis style design so the motherboard and power supply can be removed to allow for installation.

Full Approvals Provide Peace of Mind

In order to ensure peace of mind for both the installer and end user, FireClass products are third party approved and certified to the relevant European Standards. FireClass approvals go beyond the minimum requirements including EN54 and EN12094-1 approval of the J400 Series and the Prescient III Extinguishing Panel having EN54-2, EN54-4 and EN12094-1 approval. EN54 detector approval is also provided for all detectors in the FireClass range.



Enviably Point Detector Range

The FireClass range of conventional detectors can be used in all fire risk situations, from slow smouldering fires using CO technology to the fast flaming fires using the unique High Performance Optical detector, which emulates the characteristics of the ionisation detector, without the need for radioactive components.

High Performance Optical Multisensor is a general purpose detector that can be used as an ionisation detector replacement.

Carbon Monoxide/Heat Multisensor provides a high level of protection in environments where traditional smoke detectors are unsuitable.

Point Infrared Flame Detector provides a low cost solution and early detection of liquid fuel fires.



J408

- Low cost EN54 and EN12094-1 approved panel.
- Available in 2,4 and 8 zone versions.
- Extinguishing module available.
- Optional repeater available.
- Versatile easy to install enclosure.



Prescient III

- EN54 approval for detection capability.
- EN12094-1 approval for gas releasing capability.
- Wide range of control panel status indicator units available in standard and weatherproof enclosures.



Precept EN

- Fully featured range of engineered conventional panels.
- Available in 2,4,8, 16 and 32 zones.
- Up to 5 repeaters per panel connecting a two wire bus.
- Percept offers extensive expansion from relay modules to alarm circuit expansion.



Sounders and Cap-up Beacons

- Comprehensive range of sounders and beacons.
- Wide selection of sounds to match new and existing applications.
- Visual alarms available in the sounder/ beacon range.



Remote Indicator

- Commonly used when line of sight is not available to the detector.
- Discreet devices used to reduce the fire search time.



Detector Bases and Accessories

- Detector bases and accessories.
- Range of standard bases, sounder bases and sounder/ beacon bases complemented by the time saver ceiling adaptor allowing fast and easy installation.



J424-8

- EN54 and EN12094-1 approved.
- Expandable to 24 zones.
- Extinguishing module available.
- Optional repeater available.



Duo CEL

- Low cost EN54 and CPD approved introductory panel.
- Available in 2,4 and 8 zone versions.
- Key activated controls eliminating the need to remember codes.
- Optional repeater available.
- Versatile easy to install enclosure.



Call Points

- The most recognisable indoor and outdoor callpoint.
- Available for both standard and 2 wire installations.
- Supplied with or without back box for easy installation.



Door Release

- Both 24Vdc and 230Vac low cost units available.
- Finishes available in plastic, chrome or brass.
- Essential piece of fire protection equipment for most installations.



FireClass 600 Series Detection

- Comprehensive low cost range of conventional detectors with advanced technology.
- Combined optical/heat detector ideal for ionisation replacement.
- Advanced carbon monoxide detector.
- Solar blind infrared flame detector.

Duo-Cel



General Information

FireClass Duo-Cel brings a high level of functionality in an entry level package suitable for most small installations.

The panel is designed to work seamlessly with the FireClass range of detectors, call points and sounders and has many useful configurable options, inputs and outputs to aid with installation and retrofitting.



General Features

- Fully approved.
- 2, 4 & 8 Zone versions available in an aesthetically pleasing design.
- Sturdy, flame retardant, ABS plastic enclosure with controls, zone text insert and indications overlay.
- Easy to install, program and use. Key operated controls access.
- Panels can be surface or semi flush mounted and have 20mm cable gland breakouts.
- Comprehensive LED indications and user/engineer controls.
- Low standby power consumption.
- 4 Sounder circuits 4 & 8 zone, 2 on 2 zone panel. Zonal & Alert sounder options configurable.
- 1.5A switched mode power supply with temperature compensated battery charging.
- Enclosure houses 3.4Ah SLA batteries as standard.
- 8 Zone repeaters available with 24V or mains operation (suitable for 4 & 8 zone panels only).
- Short circuit zone activation option (Global).
- End of Line zone resistor option for retro.

Product Order Codes

508.031.702	Duo-Cel 2 Zone Panel
508.031.703	Duo-Cel 4 Zone Panel
508.031.704	Duo-Cel 8 Zone Panel
508.031.705	Duo-Cel 8 Zone AC Repeater
508.031.706	Duo-Cel 8 Zone DC Repeater

FireClass Spares & Accessories Product Order Codes

2501061	Spare enable key for FireClass Duo-Cel
2605502	Motherboard Fireclass Duo-Cel 2 Zone Panel
2605503	Motherboard Fireclass Duo-Cel 4 Zone Panel
2605504	Motherboard Fireclass Duo-CEL 8 Zone Panel
2605505	Motherboard Fireclass Duo-Cel 8 Zone AC Repeater
2605538	EOL Kit for FireClass Duo-CEL
2605506	Motherboard Fireclass Duo-Cel 8 Zone DC Repeater
2000931	Bag with installation accessories (Fixing Kit) for Fireclass Duo-Cel Panels
2000932	Bag with installation accessories (Fixing Kit) for Fireclass Duo-Cel Repeater

Precept EN 2, 4, 8, 16 & 32 Zone



General Information

The Precept EN range of conventional control panels are powerful yet user friendly. They are designed and manufactured to a high standard and are approved by LPCB to EN54 parts 2 & 4.

These panels are available in 2,4,8,16 & 32 Zone versions along with suitable repeaters for all models.

The 8 - 32 Zone panel models are capable of driving any combination of 8 channel output expansion boards (relays, alarm circuits and open collector 0v outputs) which can be set to be zonally activated or common output modes.

Each panel has extensive configuration options but remains easy to install, programme and operate. This is supported by comprehensive documentation on commissioning, operating and maintenance.

The panels are designed to work with a wide range of manufacturers' detectors and are able to cope with many types of installation (new or retrofit).



General Features

- Fully Approved.
- From 2 to 32 zones (up to 32 detectors per zone).
- Comprehensive end-user facilities (access level 2).
- Designed & built using the latest technology for optimum performance and consistently high quality.
- Extensive configurable facilities for the engineer via DIP switches.
- 4 alarm circuits as standard (4 zone panel and above).
- Up to 5 fully-functional repeaters - 2-wire RS485.
- Range of EN54 compliant power supply modules, designed to meet the specific load requirements of each size panel.
- Zonal one-man test feature and sounder one-man test facility.
- Short circuit to fire setting for use with older type detectors.
- Panel inputs for class change, evacuate, silence alarms, system reset.
- 3 open-collector outputs for evacuate, buzzer active, disablement active.
- Auxiliary supply output - monitored fuse.
- Panel expansion boards for open collector, relay and alarm outputs (for 8 zone panel or higher).
- Optional timer clock/counter module.
- Optional foreign languages text insertable versions available.
- Optional semi-flush and fully flush mounting bezels available.

Product Order Codes

508.032.701	Precept EN 2 Zone Panel
508.032.702	Precept EN 4 Zone Panel
508.032.703	Precept EN 8 Zone Panel
508.032.704	Precept EN 16 Zone Panel
508.032.706	Precept EN 32 Zone Panel

508.032.707	FireClass Precept EN 8 Zone AC Repeater
508.032.708	FireClass Precept EN 16 Zone AC Repeater
508.032.709	FireClass Precept EN 32 Zone AC Repeater
508.032.710	FireClass Precept EN 8 Zone DC Repeater
508.032.711	FireClass Precept EN 16 Zone DC Repeater
508.032.712	FireClass Precept EN 32 Zone DC Repeater

FireClass Precept EN 2, 4, 8, 16 & 32 Zone



Spares & Accessories Product Order Codes

2605061	C1631 Repeater Interface
2605063	C1633 LED O/C Driver PCB
2605064	C1634 Relay Output PCB
2605065	C1635 Alarm/Mon O/P PCB
2605060	C1630 Output Driver Interface
2605085	Motherboard for FireClass Precept EN 2 Zone Panel
2605086	Motherboard FireClass Precept EN 4 Zone Panel
2605087	Motherboard FireClass Precept EN 8 Zone Panel
2605088	Motherboard FireClass Precept EN 16 Zone Panel
2605089	Motherboard FireClass Precept EN 32 Zone Panel
2605090	Motherboard FireClass Precept EN AC Repeaters
2605091	Motherboard FireClass Precept EN DC Repeater
2000682	Lock and barrel for Precept EN
508.032.713	Displayboard for FireClass Precept En 2 Zone Panel
508.032.714	Display board FireClass Precept En 4 Zone Panel
508.032.715	Display board FireClass Precept En 8 Zone Panel
508.032.716	Display board FireClass Precept En 16/16L Zone Panel
508.032.717	Display board FireClass Precept En 32 Zone Panel

2000614	Bag with installation accessories (Fixing Kit) for FireClass Precept EN Panels
2000619	Bag with installation accessories (Fixing Kit) for FireClass Precept EN Repeater
2603011	Semi Flush Bezel Precept EN 2,4,8,16 PANEL & 8,16 REP Polished Stainless Steel
2603061	Fully Flush Bezel Precept EN 2,4,8,16 PANEL & 8,16 REP Polished Stainless Steel

Prescient III Gas Releasing



General Information

The FireClass Prescient III gaseous extinguishant control panel is powerful yet user-friendly and is designed and manufactured to a high standard. The panel features approval to BSEN 12094-1:2003, BSEN 54-2 and 4 and is designed to BS7273 part 1.

The panel has extensive configuration options but is easy to install, programme and operate. The removable chassis enables the engineer to "first fix" an empty cabinet and then fit the chassis at the commissioning stage.

This is supported by comprehensive documentation on commissioning, operating, maintenance and fault finding.

In addition there is a comprehensive range of compatible accessories available to meet most customer requirements.

Three fully-monitored detection zones are provided. Zones 1 and 2 normally provide first stage and second stage fire conditions to allow extinguishant discharge (coincidence detection zones). Zone 3 is an auxiliary zone for detection only purposes. Zone 4 is used as a manual release zone.



General Features

- Fully Approved.
- Monitored inputs for gas discharged, gas low, isolation valve closed/abnormal, gas trapped in manifold.
- Control inputs for auto/manual, gas hold, gas abort.
- 1 minute actuator cut off option.
- Monitored actuator/solenoid release.
- Common fire, fault, relay / monitored output facilities.
- 1st stage, 2nd stage, 3rd stage and gas discharged relay / monitored output facilities.
- Reset relay facilities.
- Single or double knock operation.
- Pre-discharge delay adjustable from 0 to 60 seconds with visible countdown timer.
- Discharged indication with or without pressure switch.
- Inhibit silence alarms until gas discharged.
- Option for rapid buzzer pulse when gas imminent.
- One man zone and sounder test.

Product Order Codes

508.033.751	FireClass Prescient III Gas Panel
--------------------	-----------------------------------

Spares & Devices Product Order Codes

2605183	Motherboard for Prescient III
2000682	Lock and barrel for Prescient III
2000898	Bag with installation accessories (Fixing Kit) for Prescient III

Gas Extinguishing Status Units

Status Lamp Unit



General Features

- Two core data link between panel and status unit.
- Two core power connection between panel and status unit.
- Indication of events/status only unit.

Product Order Codes

SLU1 508.033.752

Status Lamp Unit



General Features

- Two core data link between panel and status unit.
- Two core power connection between panel and status unit.
- Indication of events/status.
- Manual Release.
- Auto/Manual Keyswitch.

Product Order Codes

SLU2 508.033.753

Status Lamp Unit



General Features

- Two core data link between panel and status unit.
- Two core power connection between panel and status unit.
- Indication of events/status.
- Manual Release.
- Auto/Manual Keyswitch.
- Countdown timer.
- Abort and hold off switch.

Product Order Codes

SLU3 508.033.754

Status Lamp Unit



General Features

- Two core data link between panel and status unit.
- Two core power connection between panel and status unit.
- Weatherproof
- Indication of events/status.
- Auto/Manual Keyswitch.

Product Order Codes

SLU4 508.033.755

J408



General Information

Designed and made according to EN54 standards, the J408 is a microprocessor based control panel for small to medium applications. It has 8 zones, each supports up to 32 detectors, for a maximum of 256 detectors. Each detection zone has an alarm-repeat output for selective management in the event of fire.

The control panel has supervised, silenceable alarm-outputs for self-powered sirens, piezo electric sirens, fire bells, flashers, telephone diallers, etc. This easy-to-use control panel is protected by a lockable frontplate which allows operational access to authorized personnel only.

The optional Software in Windows™ environment, allows full systems management of events memory, files, reset and all the programmable functions provided by the control panel.



General Features

- Fully Approved.
- Optional extinguishment module EN12094-1 approved.
- Up to 32 devices can be connected to each zone.
- Gas zone compatible with 4 – 20 mA gas detectors.
- One alarm-repeat output for each input zone.
- Manual call point recognition.
- Signals missing detectors.
- 2 supervised, silenceable, bypassable 24 V alarm output for sirens activation.
- Silenceable fault-warning output for the activation of signalling and auxiliary devices.
- Supervised fire output for telephone dialler activation.
- Programmable open collector output.
- Dry contact alarm-relay for the activation of auxiliary devices.
- Day/Night mode.
- Alarm verification time.
- Programmable restoral and reset times.
- Programmable from PC or keypad.
- 50 event log viewed via PC.
- Alarm/fault memory activated until next reset.
- Command for silencing sirens.
- Keypad commands require key or pin code.
- Repeater available.

Product Order Codes

557.201.522	J408-2 2 zone conventional fire panel English
557.201.523	J408-4 4 zone conventional fire panel English
557.201.524	J408-8 8 zone conventional fire panel English
508.031.721	J408-2 2 zone conventional fire panel Italian
508.031.722	J408-4 4 zone conventional fire panel Italian
508.031.723	J408-8 8 zone conventional fire panel Italian
557.201.528	J408-2 2 zone conventional fire panel Israel

557.201.529	J408-4 4 zone conventional fire Israel
557.201.530	J408-8 8 zone conventional fire panel Israel
557.201.532	J408-2 2 zone conventional fire panel Portuguese
557.201.533	J408-4 4 zone conventional fire panel Portuguese
557.201.534	J408-8 8 zone conventional fire panel Portuguese
557.201.539	J408-2 2 zone conventional fire panel Spanish
557.201.540	J408-4 4 zone conventional fire panel Spanish
557.201.537	J408-8 8 zone conventional fire panel Spanish

J424-8



General Information

Designed and made according to EN54 standards, the J424 is a microprocessor based control panel for medium and large applications. It has 8 zones main board and supports two J400-EXP8 expander modules, for a total of 24 zones and 512 detectors.

Each detection zone is equipped with an alarm repeat output for selective alarm management in the event of fire. The control panel has supervised and silenceable alarm outputs for the control of the self-powered sirens, piezoelectric sirens, fire bells, flashers, telephone dialers, etc. This easy-to-use control panel is protected by a lockable front plate which allows operational access to authorized personnel only.

The J424 control panel is also available with a backlit display, which shows all the information regarding the control panel status. The optional software in Windows™ environment, allows full systems management of events memory, files, reset and all the programmable functions provided by the control panel.



General Features

- Fully Approved.
- Optional extinguishment module EN12094-1 approved.
- 8 zones mainboard.
- Supports 2 J400-EXP8 expander modules, total 24 zones.
- Up to 32 devices can be connected to each zone.
- Gas zone compatible with 4 – 20 mA gas detectors.
- One alarm-repeat output for each input zone.
- Manual call point recognition.
- Signals missing detectors.
- 2 supervised, silenceable, bypassable 24 V alarm output for sirens and activation.
- Silenceable fault warning output for the activation of signalling and auxiliary devices.
- Supervised fire output for telephone dialler activation.
- Programmable open-collector output.
- Dry contact alarm-relay for the activation of auxiliary devices.
- Day/Night mode.
- Alarm verification time.
- Programmable restoral and reset times.
- Programmable from PC or keypad.
- 50 event log viewed via PC.
- Alarm/fault memory activated until next reset.
- Command for silencing sirens.
- Keypad commands require key or pin code.
- Repeater available.
- Optional backlit display.

Product Order Codes

557.201.525	J424-8 8 zone conventional fire panel expandable up to 24 English
557.201.531	J424-8 8 zone conventional fire panel expandable up to 24 Israel
557.201.535	J424-8 8 zone conventional fire panel expandable up to 24 Portuguese
557.201.538	J424-8 8 zone conventional fire panel expandable up to 24 Spanish
508.031.724	J424-8 8 zone conventional fire panel expandable up to 24 Italian

J400 Series Accessories



Repeater for J424 and J408-8 Control Panels



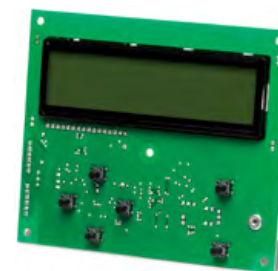
General Features

- 4 wire connection to the panel (power supply included).
- Can be connected to J408-8 and J424.
- The repeater panel may be installed up to 1000 m from the control panel.
- Displays all audible and visual signalling.
- Control panel management.
- Dimensions (wxhxd): 280x320x40 mm.
- Weight: 2.260 Kg.

Product Order Codes

- 557.201.526** J400REP Repeater English
557.201.536 J400 REP Repeater Portuguese
557.201.541 J400REP Repeater Spanish
508.031.728 J400 REP Repeater Italian

LCD display module for J424 Panels English



General Features

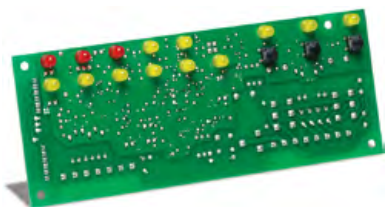
- Backlit LCD display module, two lines with 16 characters per line.
- Main text regarding the system's status and equipped with 6 scroll keys.

Product Order Codes

- 557.201.527** J400LCD English
508.031.727 J400 LCD Italian

J400 Series Accessories

Extinguishment Module for J400 Series



General Features

- Output for electro-valves controlled by logic (AND/OR) between the status of the control panel zones.
- Programmable extinguishment delay.
- Output signals: extinguishment delay, extinguishment and released.
- Input for the forced activation of the extinguishment devices - Input for the pressure switch.
- Fault signalling on pressure-switch supply line.

Product Order Codes

508.031.726 J400-EXT



8 Zone Expander Module for J424 Panels



General Features

- 8 balanced, bypassable fire zones.
- Expand J424-8 to a 16 or 24 zone panel.

Product Order Codes

508.031.725 J400EXP8

J400 Series Spares

Product Order Codes

508.031.725 J400EXP8
 557.201.555 B015-2 Motherboard for J408-2
 557.201.556 B015-4 Motherboard for J408-4
 557.201.557 B016 Motherboard for J408-8 and J424-8

Detectors



600 Series Detectors



General Information

The 600 Series conventional detectors are the result of the evolution of conventional detector design but with extra unique style features enabling improved operation, installation and easy servicing. Included within the 600 Series range is the new conventional enhanced carbon monoxide detector (601CH). The incorporation of a reliable electrochemical CO detection cell and high specification low thermal mass thermistor for accurate temperature detection has enabled the introduction of an enhanced CO detector suitable for fast, reliable fire detection on both slow and fast developing fires.

The traditional detectors or two-status detectors in the 600 Series have two output statuses: standby or alarm.

When used in conjunction with suitable monitoring and signalling equipment, they create an automatic detection system.

Application

As each type of detector responds to a particular “fire characteristic”, the relative speed of response of the detector is therefore dependent upon the type of fire being detected.

The range of 600 Series conventional detectors have been designed to provide the earliest possible warning of a fire condition, with a minimum possibility of false/unwanted alarms.

General Features

- EN54 Approved from LPCB.
- Low operational voltage: 10.5 Vdc to 33 Vdc.
- Aesthetically discreet.
- Superior performance and reliability.
- Designed for rapid installation.
- Integrated alarm LED.
- Remote LED connection.
- Wiring polarity independent.
- Compatible with standard mounting base and with relay base.



Optical Smoke Detector



General Features

601P detector is capable of detecting the visible smoke produced by materials which smoulder or burn slowly, i.e. soft furnishings, plastic foam etc; or ‘smoke’ produced by overheated but unburnt PVC. These detectors are particularly suitable for general applications and areas where cable overheating may occur e.g. electrical services areas.

Product Order Codes

601P 516.600.001



High Performance Optical Detector



General Features

601PH detector reacts to the whole range of fire products from slow smouldering fires, producing visible particles to open flaming fires producing large numbers of very hot smaller sized aerosols. It combines optical and heat detector technology to detect clear burning fire products which hitherto could only be easily detected by ion-chamber detectors.

For normal ambient conditions, the high performance optical detector behaves as a normal optical detector.

Only when a rapid rise in temperature is detected does the sensitivity of the detector increase and the presence of smoke will confirm a fire condition.

The HPO will not operate on a rate of rise of temperature alone.

Product Order Codes

601PH 516.600.002



Heat Detector - Rate of Rise



General Features

601H-R (rate of rise) detectors detect abnormally high rates of rise of temperature. Can be used in areas where smoke sensors are unsuitable due to environmental conditions (smoke, dust etc.). Such areas include kitchens, locker rooms, canteens, garages, loading bays etc.

Product Order Codes

601H-R 516.600.003



600 Series Detectors

Heat Detector - Fixed Temperature



General Features

611H-F (fixed temperature) detectors detect abnormally high (static) temperatures . Can be used in areas where smoke sensors are unsuitable due to environmental conditions (smoke, dust etc,). Such areas include kitchens, locker rooms,canteens, garages, loading bays etc.

Product Order Codes

611H-F 516.600.214



...

Multi Sensor CO and Heat Detector



General Features

601CH detector is a unique general purpose fire detector which provides very early warning of slow smouldering fires. Ideal for sleeping risks the CO fire detector is also well suited to many applications where heat detection is insufficient but smoke detection causes false alarms. As CO travels more freely than smoke the position of CO fire detectors is more flexible. This feature is particularly useful in large complex structures such as atria and warehouses, where the positioning of smoke detectors is difficult.

Product Order Codes

601CH 516.600.004



Solar Blind Infra Red Flame Detector



General Features

A detector that is ideal for protecting large open areas without sacrificing speed of response to flaming fires. A unique detector ideal for fast response to flaming fires typically caused by flammable liquids.

Product Order Codes

601F 516.600.006

Detector Bases





Detector Bases

General Information

The FireClass range of conventional detector ancillaries have been designed with the needs of the installer in mind. The range includes standard and diode bases, sounder, beacon and relay bases and the unique time saver ceiling tile adaptor.

Many of today's buildings feature a false or suspended ceiling. Installation of fire detectors to this type of ceiling has been seen as both difficult and time consuming with the installation requiring the ceiling to be in place before the detector base and associated second fix can take place.

By using the new Time Saver Ceiling Tile Adaptor this whole installation process has been made much easier. The complete process from wiring connection to detector commissioning can now take place as a single operation and be completed even before the ceiling has been installed.

A choice of functional bases include the 601SB(D) EN54-3 approved low current sounder base with adjustable volume and tone.

They do not require the use of a separate base and fit directly to a standard electrical box or the CTA adaptor plate.

The MC600 relay base provides dual relay contacts for signalling external devices on conventional detection systems. Very low operating current even when the relay is energised, enable the relay base to be used without additional power. The relay contacts operate when the detector enters the alarm condition.



General Features

- Aesthetically discreet both standard and diode base.
- Superior performance and reliability.
- Designed for rapid installation.
- Remote LED connection
- Sounder base with adjustable volume control & selectable tones.
- Extra low current sounder bases.
- Double pole relay base for local control.
- Time saver ceiling tile adaptor reduces installation time on suspended ceilings by 30%.
- Adaptor plate allows the time saver ceiling tile mount to be used with a wide range of alarm accessories.

Detector Base



The new 4B 4" Detector Base is designed to snap-fit to the Ceiling Tile Adaptor or it can be screw fixed to a ceiling in the traditional manner.

General Features

- Aesthetically discreet.
- Superior performance and reliability.
- Designed for rapid installation.
- Remote LED connection.

Product Order Codes

4B 517.050.041



Diode Base



The 4B-D Conventional Diode Base is a standard 4 inch base fitted with a continuity diode, for use with all Series 600 detectors.

The base is designed to ensure that conventional systems meet the requirements of BS5839 Pt:1 for callpoints placed after detectors.

General Features

- Compatible with Series 600 LowProfile Detector Range.
- Designed for two wire operation.
- Facility to drive a remote indicator.
- A temporary park position is provided so that the field wiring can be tested with the detector in situ.
- May be fitted directly to a British or European conduit box or directly into the ceiling

Product Order Codes

4B-D 517.050.045



Detector Bases

Deck Head Mounting



Where the detectors are mounted in humid and environmentally challenging situations such as marine or offshore installations, the 4B DHM deck head mount provides a sealed waterproof mounting which protects the electrical connections in the base. Can be screwed, bolted / welded to the deck head. Supplied with 1 terminal. If more are required, use the optional base accessory.

General Features

- 4 x 20mm gland entries.
- Fits ALL 5" bases.
- IP55 with supplied gasket.

Product Order Codes

4B-DHM 517.050.051
517.050.612 Terminal Kit (x10)



Euro Mount



The euro-mounting base provides a matching back box, which allows the 5" bases to be ceiling mounted with conduit entries for standard 18 and 21mm conduit.

General Features

- 2 x 18mm conduit entries.
- 2 x 21mm conduit entries.
- Fits all 4" Bases.
- Accepts up to 8 accessory terminals.
- Base Accessory terminal kit (pack of 10) part number 517.050.612.

Product Order Codes

4B-EM 517.050.052
517.050.612 Terminal Kit (x10)



Universal 5" Base With Relay



The 5B is the most common base designed to fix directly to the ceiling or various common backboxes. This base allows a detector to be plugged in directly.

General Features

- Variety of fixing options.
- Remote LED connections.
- Park position and address flag holder.
- Integral breakout locking key.

Product Order Codes

MUB-RV 508.031.751

Ceiling Tile Adapter Kit



The Time Saver Ceiling Tile Adaptor is used with the 4B 4" detector base snap fit base and consists of three parts, a bezel and clamp that are fitted to the ceiling tile and a back-box that carries the detector and base assembly. Requires a 127mm diameter hole. The CTA adaptor plate allows this to be used with other devices such as the FC430SB.

General Features

- Cuts installation time by 30%.
- Commission the system before the suspended ceiling is installed.
- Suitable for ceiling tiles from 1mm.
- Made from flame retardant material.
- No additional back-box is required.
- Time saver is designed for use with a new snap-fit 4" detector base.
- Adaptor available for use with the AV base & other devices.

Product Order Codes

CTA-BB CTA Back Box
517.050.056

CTA-BC CTA Bezel and Clamp
517.050.057



CTA-AP CTA Adaptor Plate



General Features

The CTA adaptor plate allows the Ceiling Tile Adaptor to be used with other devices.

Product Order Codes

CTA-AP CTA Adaptor Plate 517.050.058



Detector Bases

Protective Cage



White powder coated steel protective cage for Series FC400 Detectors fitted with a sounder base. Dimensions: 120mm dia x 80mm deep

Product Order Codes

Protective cage 517.050.011

Protective Detector Sounder Base Cage



Robust steel protective cage for Series FC400 detector ranges using the 5" bases. Ideal for schools and sport halls or whenever detectors need protection. Strong coated steel construction with 4 point fitting.

Product Order Codes

Protective Detector Sounder Base Cage 517.050.614

Call Points



Manual Call Points



General Information

A comprehensive range of callpoints for use with FireClass conventional systems. All the callpoints are designed to enable an alarm signal to be given by breaking a glass element with the option of a resettable, deformable element. If required, an optional transparent hinged cover may be installed to guard against accidental operation.

General Features

- Distinctive and recognizable styling.
- Surface or flush mounting.
- Test key facility, speeds maintenance visits.
- Optional transparent hinged cover.
- Optional plastic deformable call point element for food processing areas.
- IP67 waterproof models for external application.

Conventional Manual Call Point with Glass



conventional manual alarm call point with integral alarm LED and activation resistor. Operation is by break glass. This call point is semi flush mounted or can be surface mounted using back box 515.001.021 or 10-115, and comes complete with a test key.

Product Order Codes

Conventional Manual Call Point with Glass (No Back Box) 2501012

Conventional Manual Call Point with Plastic Element



A conventional manual alarm call point with integral alarm LED and activation resistor. Operation is by resettable deformable element. This call point is semi flush mounted or can be surface mounted using back box 515.001.021 or 10-115, and comes complete with a test key.

Product Order Codes

Conventional Manual Call Point with Plastic Element (No Back Box) 2501233

Conventional Manual Call Point with Plastic Element



A conventional manual alarm call point with integral alarm LED and activation resistor. Operation is by resettable deformable element. Comes complete with a back box and a test key.

Product Order Codes

Conventional Manual Call Point with Plastic Element (With Back Box) 2501234

Conventional Weatherproof Manual Call Point



A weatherproof manual alarm call point with integral alarm LED and activation resistor making it compatible with the Prescient III Suppression Panel. Operation is by break glass. This call point is surface mounted and comes complete with back box & test key.

Product Order Codes

Conventional Weatherproof Manual Call Point 2501176

Manual Call Points

Conventional Manual Callpoint



The MCP200CS is a resettable manual call point for conventional fire control panels. Easy to use and install, it complies with the EN 54-11 standard. The MCP200CS has a large activation surface that gives a visual indication after use. Standby status is restored with a simple action using the key provided, while the transparent plastic cover provides an effective barrier to prevent accidental activation. An alarm status alert is completed by the illumination of the red LED indicator. Other features include, easy installation using push-fit terminals and the option of selecting the alarm current in order to isolate call point vs detector alarm alerts where possible on the same zone (only where the control panel design support this feature).

Product Order Codes

MCP200CS 514.001.171

Spare Plastic Element for Manual Call Point

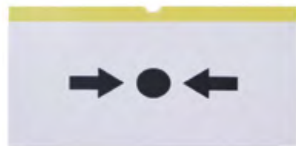


EN54 Part 11 Spare Glass for Callpoints (Pack of 5).

Product Order Codes

Spare Plastic Element for Manual Call Point 515.001.119

Spare Plastic Element for Manual Call Point



Deformable operating unit "glass" for use in place of glasses, for kitchens or other areas where glass is not acceptable.

Product Order Codes

Spare Plastic Element for Manual Call Point 515.001.127

Manual Call Point Plastic Hinged Cover



Callpoint hinged cover for use with MCP & CP style callpoint models (Colour - Clear).

Product Order Codes

Manual Call Point Plastic Hinged Cover 515.001.128

Spare Manual Call Point Keys (Pack of 10)



Test key for all MCP and CP style callpoints.

Product Order Codes

Spare Manual Call Point Keys (Pack of 10) 515.001.045

Mount Back Box with Terminals



Callpoint surface mount back box for FC420. Optional Back Box (2 terminals).

Product Order Codes

Mount back box with terminals 10-115

Standard Back Box for Manual Call Point



Standard Red surface mounting back box for indoor callpoints.

Product Order Codes

Standard Back box for manual call point 515.001.021

Sounders / Beacons / Relay Bases



Relay Bases



General Information

Functional detector bases use a common moulding which incorporates a double sided circuit board which enables electrical connections to be made on the top and bottom of the functional base. This allows the functional bases to be retrofitted into new and existing universal bases or alternatively the depth and cost of the installed detector can be reduced by using the functional base instead of the universal base.

This feature enables additional sounders to be easily added during commissioning. In addition, changes to the building during its life can be easily adapted to, by retrofitting sounders and relay outputs to existing detection points.

When functional bases are fitted to universal bases, they automatically lock into position. Removal is then achieved using the detector removal tool. This feature ensures that the detector and functional bases are removed separately.

Sounder Base



General Features

- Manufactured to EN54 part 3.
- Integral sounder and detector base.
- Volume and tone adjustable after installation.
- Low Power Synchronisation.
- Do not require use of a standard base (may be installed directly onto a standard base box).

Product Order Codes

601SB 577.001.035

Diode Sounder Base



General Features

- Manufactured to EN54 part 3.
- Integral sounder and detector base.
- Volume and tone adjustable after installation.
- Low Power Synchronisation.
- Do not require use of a standard base (maybe installed directly onto a standard base box).

Product Order Codes

601SBD 577.001.037

Relay Bases

Sounder Base White Cap



A plastic cap which fits onto the 601SB / 601SBD / 602SB / 602SBD Sounder Base to enable these bases to operate as a sounder without fitting a detector.

Product Order Codes

Sounder Base White Cap 557.001.040.Y

MC600 Functional Relay Base



The 600 Series relay base provides dual relay contacts for signaling external devices on conventional detection systems. Very low operating current even when the relay is energised, enable the relay base to be used without additional power. The relay contacts operate when the detector enters the alarm condition.

General Features

- Dual pole 24Vdc relay contact (60VA).
- Status indicator LED.
- Low power consumption (<20µA except start up).
- Latching operation.
- Can be used instead of a standard base.
- Requires diode fitting if used in place of a diode base.

Product Order Codes

MC600 Functional Relay Base 568.001.018

Sounders / Beacons



General Information

A range of sounders to meet a wide variety of alarm applications where loud, penetrating and distinctive warnings must be given to alert people of fire situations.

In addition, multi tone electronic sounders can give a variety of sounds to signal other conditions e.g. "extinguishing gas release imminent," etc.

General Features

- Wide range of both bells and electronic sounders.
- High sound output characteristics.
- Low current consumption.
- Clean lines, modern styling.
- Easy to install, low installation costs.
- Weatherproof units for outdoor use.
- Distinct sounds are available.
- Motorised and Solenoid bells available.
- Wide range of voltages available.

6" Electronic Bell



Fire bells make up the range of 150mm (6 inch) and 200mm (8 inch) internal and external units. Being of aluminium construction, our bells have a very high volume output matched with extremely low power consumption - just 11mA for the 150mm internal.

Product Order Codes

6" Electronic Bell 2601012

Sounders / Beacons

6" Electronic Weatherproof Bell



The specially designed weatherproof bells have an aluminium back box giving either single or double threaded entry for maximum flexibility in installation. This is supplied as a full fixing kit with gasket and screws.

Product Order Codes

6" Electronic Weatherproof Bell 2601015



8" Electronic Weatherproof Bell



The specially designed weatherproof bells have an aluminium back box giving either single or double threaded entry for maximum flexibility in installation. This is supplied as a full fixing kit with gasket and screws.

Product Order Codes

8" Electronic Weatherproof Bell 2601016



Roshni Electronic Sounder



A flexible alarm sounder for fire and security applications complete with volume control and dil switch to provide 32 tones. Low profile Roshni with deep base offers IP65 protection. All Roshni sounders have synchronized start for self synchronization without third wire.

Product Order Codes

Roshni Electronic Sounder ROSHRDSR

Banshee Warbler



The Banshee Warbler is a fire alarm sounder which is part of the conventional range of sounders and fire alarms supplied by Tyco, who manufacture the leading fire detection equipment brand, FireClass. The 24v Banshee Excel is a fire alarm sounder which has 32 selectable tones and 3 volume settings. The easy push and twist lockable bayonet mounting makes installing fire sounders such as the Banshee fire alarm sounder, a quick and easy process, saving the installer time and money.

Product Order Codes

Banshee Warbler 576.501.060

Solista LX Wall Beacon Red Body White Flash EN54-23 W-2.4 7.5



The Solista LX Wall product takes its slimline design. Available in a red colour and with a shallow base, the Solista LX Wall is suitable for a variety of applications. The Solista LX Wall has a unique lens design that distributes light to achieve the required illumination, whilst using minimum current.

General Features

- Conforms with EN 54-23 (meets the required illumination 0.4lux/m2 over entire room area).
- LED technology for long service life and low current consumption, maximising the number of devices on your alarm circuit.
- Unique optics for light management, with lens design that optimises light dispersal, minimising power wastage.
- Up to 7.5m coverage volume which reduces the number of devices required to cover an area.
- Coverage switch feature • For smaller areas switch down from 7.5m to 5m, reducing power consumption and saving up to 50%.
- Wide input voltage range for flexibility in system design
- Flash rate switch feature • Reduce from 1Hz to 0.5Hz to reduce power consumption by up to 50%.
- Soft start up for reduced current peak at start up, reducing circuit loading
- Locking Bases to prevent easy removal of device.

Product Order Codes

Solista LX wall beacon 812007FULL-0108
Solista LX wall beacon deep base 812007FULL-0109

Sounders / Beacons

Solista LX Ceiling Beacon White Body White Flash Shallow Base EN54-23 C-3-7.5



The Solista LX Ceiling Beacon has a unique lens design that distributes the light in a cylindrical shape, to achieve the required illumination specified by EN 54-23. Designed for installation at a height of up to 3m and with a discreet appearance, the device is ideal for a variety of applications.

General Features

- Conforms with EN 54-23 (meets the required illumination 0.4lux/m2 over entire room area).
- LED technology for long service life and low current consumption, maximising the number of devices on your alarm circuit.
- Unique optics for light management, with lens design that optimises light dispersal, minimising power wastage.
- Up to 7.5m coverage volume which reduces the number of devices required to cover an area.
- Coverage switch feature - For smaller areas switch down from 7.5m to 5m, reducing power consumption by up to 50%.
- Wide input voltage range leads to flexibility in system design
- Flash rate switch feature -Reduce from 1Hz to 0.5Hz setting, reducing power consumption by up to 50%.
- Soft start up means no current peak at start up, thus reducing circuit loading.
- New connection layout creates easier wiring and connection on installation.
- Locking Bases to prevent easy removal of device.

Product Order Codes

Solista LX ceiling beacon 812020FULL-0121

RoLP LX Wall Beacon Red Body White Flash RoLP Base EN54-23 W-2.4 7.5



The RoLP LX Wall base is ideal for dual use applications where a visual alarm device is required in addition to an audible alarm. Recommended for wall use and requiring just one installation point, the RoLP LX Wall is available to use with any standard RoLP sounder. Ingress protection rating of IP65.

Product Order Codes

RoLP LX wall beacon 8500023FULL-0023

Symphoni LX Wall



The Symphoni LX Wall is a durable sounder beacon that is certified to EN 54-23. Boasting impressive performance and a durable design, it ensures reliability and energy efficiency. Its high sound output makes it suitable for open areas or where there is higher than normal background noise.

General Features

- Ultra low current consumption.
- Up to 7.5m coverage volume (switchable to 2.5m).
- 0.5 or 1Hz Flash rate.
- Coverage switch to 2.5m.

Product Order Codes

Symphoni LX Wall 8500043FULL-0043



Symphoni LX WPWall



The Symphoni LX WP Wall device offers a weatherproof alternative to the Symphoni LX Wall device. With an ingress protection rating of IP66, it is suited for wet and outdoor environments.

General Features

- Ultra low current consumption.
- Up to 7.5m coverage volume (switchable to 2.5m).
- 0.5 or 1Hz Flash rate.
- Coverage switch to 2.5m.

Product Order Codes

Symphoni LX WPWall 8500048FULL-0048

Sounders / Beacons

H201 Electronic Sounder



The H201 is a sounder indicating device for fire indication systems compliant with standard EN 54-3.
It emits an acoustic signal selectable from the 32 options, and has a trimmer for adjusting the volume.

Product Order Codes

H201 Electronic sounder 576.501.071

HS201 Electronic Sounder / Beacon



The HS200 is a sounder-beacon indicating device for fire indication systems compliant with standard EN 54-3.
It emits an acoustic signal selectable from the 32 options, and has a trimmer for adjusting the volume.

Product Order Codes

HS201 Electronic sounder•beacon 576.501.072

Door Release Units

24Vdc White Plastic Door Holder



General Features

- Essential piece of fire protection equipment for most installations.
- Various styles and mounting methods available, including plastic, chrome and brass.
- Integrated release button as standard.

Product Order Codes

24Vdc White Plastic door Holder 2501033

230Vdc White Plastic Door Holder



General Features

- Essential piece of fire protection equipment for most installations.
- Various styles and mounting methods available, including plastic, chrome and brass.
- Integrated release button as standard.
- 230Vdc low cost units available

Product Order Codes

230Vdc White Plastic door Holder 2501034



Square Remote Indicator



Designed for fire detection systems requiring local indication of an individual or group of fire detectors in alarm mode, the VRLU indicator utilizes an ultra-bright LED with a wide range of illumination.

The VRLU remote indicator is able to operate with many types of conventional and analogue addressable fire detectors, frequently eliminating the requirement to stock two types of indicator. The VRLU may also be used for other applications requiring a local visual indicator. A purpose-made back box is available as a complete unit.

Product Order Codes

Square Remote Indicator 2500226

Round Remote Indicator



The round Remote Indicator is a light-weight, compact indicator for use in fire protection systems. The remote indicator comprises two parts : the base which is installed onto a wall or soffit and the lid which is fitted to the base with a bayonet lock.

Product Order Codes

Round Remote Indicator 2500227

601RIL



The 601RIL Remote Indicator is used where a detector LED is not visible i.e., when the detector is mounted in a roof void, lift shaft etc.

General Features

- Dimensions (WxHxD): 86x86x16 mm.
- Operating Temperature: -20 to +70 °C.
- Storage Temperature: -45 to +80 °C.
- Relative Humidity: 95% (non condensing).
- Current consumption Standby: 0 Alarm: 5.43 mA.

Product Order Codes

601RIL 540.003.006

PSUA Series



These units are closely based on FireClass control panels. The units comprise these components which are common to FireClass control panels: A metal housing, containing the following components: A PSU, assembled with a PMM800 monitoring board. Also included are sundry items, such as spare fuses, in a separate bag.

Product Order Codes

557.200.731	1.9A Boxed Power Supply Unit.
557.200.732	PSUA17 5A Boxed Power Supply Unit (up to 17Ah batteries).
557.200.733	PSUA38 5A Boxed Power Supply Unit (up to 38Ah batteries).
557.202.707	FC410MIM + fixing kit for FireClass 5A/17Ah and 5A/38Ah PSU.
557.202.708	FC410MIM + fixing kit for FireClass 1.9A/7Ah PSU.

BXM Series



The BXM24/25-U and 50-U are approved by IMQ to EN 54-4:1997 + A1:2002 and EN60950-1:2001. The steel housing contains a 2.5 amp or 5 amp switch mode power supply and monitoring board and has space to accommodate 2 x 12V 17Ah sealed lead acid batteries. The 10 front panel LED's comprehensively indicate the status of the unit.

- Robust metal housing.
- Twin fused outputs.
- Temperature compensated charging.
- Deep discharge protection of batteries.
- Fault relay output.
- Size 383mm wide x 408mm high x 97mm deep.
- Weight 4.3 Kg (excluding batteries).
- Supply voltage 230VAC 50/60Hz.
- Comprehensive LED status indication.

Product Order Codes

508.031.744	BXM24/25-U - Max. 2,5A @ 27,6VDC
508.031.745	BXM24/50-U - Max. 5A @ 27,6VDC
508.031.746	BXM24/25-B - Max. 2,5A @ 27,6VDC. RS485 Bus interface for J408-8 and J424-8
508.031.747	BXM24/50-B - Max. 5A @ 27,6VDC. RS485 Bus interface for J408-8 and J424-8

Power Supply Units and Batteries

Power Supply – Battery Charger BAQ & BAW Series



The BAQ is a power supply unit and battery charger to use with appliances that require a regulated voltage of 27.6 V and a maximum current of 5,5 A. Its power output is protected against overload, short-circuit and accidental inversion of the battery polarity.

Features

- Input Voltage: 240 Vac, $\pm 15\%$ / $\pm 10\%$, 50/60Hz.
- Output Voltage: 27.6Vdc, $\pm 1\%$ / $\pm 1\%$.
- Max. battery size (charge):
 - BAQ35T24 = 2 x 12V - 7Ah max.
 - BAQ60T24 = 2 x 12V - 15Ah max.
 - BAQ140T24 = 2 x 12V - 15Ah max.
- Input Voltage: 240 Vac, -15% / $\pm 10\%$, 50/60Hz., 110Vac -15% / $\pm 10\%$ 60Hz for BAW
- Operating Temperature: $+5^\circ$ • $+40^\circ\text{C}$.
- Dimensions: 38H x 205W x 98D mm.
- Weight: 0.7Kg.

Product Order Codes

- 508.031.748** BAQ35T24 Switching power supply / battery charger - Max. 1,5A @27,6VDC
- 508.031.749** BAQ60T24 Switching power supply / battery charger - Max. 2,5A @27,6VDC
- 508.031.750** BAQ140T24 Switching power supply / battery charger - Max. 5A @27,6VDC

Battery



Product Order Codes

- PS-1221** 12 Volt 2.1 Ampere Battery
- PS-1230** 12 Volt 3 Ampere Battery
- PS-1270** 12 Volt 7 Ampere Battery
- PS-12120** 12 Volt 12 Ampere Battery
- PS-12170** 12 Volt 17 Ampere Battery
- PS-12260** 12 Volt 26 Ampere Battery
- PS-12380** 12 Volt 38 Ampere Battery
- PS-12650** 12 Volt 65 Ampere Battery
- PS-6100** 6 Volt 10 Ampere Battery

Installation Accessories



Installation Accessories

Detector Address Flags (PK100)



The FC460 Series detectors incorporate a feature, which automatically transfers the address flag to the detector base, when the detector is plugged into the base. On removal of the detector the address flag remains on the ceiling, thus ensuring that detectors are not accidentally returned to the wrong detector base following service routines.

Most of the detection panels incorporate additional fail safe software features to ensure that incorrect detector positioning does not compromise the system. Address flags are supplied in packs of 100.

Labels are provided on sheets of 250 in eight colours to enable quick identification between different loops.

General Features

- Provides clear identification of address.
- Colour coded.
- Flag remains on base

Product Order Codes

516.800.915	Address flags (pack of 100)
516.800.931	Address flag labels Loop A • White
516.800.932	Address flag labels Loop B • Yellow
516.800.933	Address flag labels Loop C • Purple
516.800.934	Address flag labels Loop D • Green
516.800.935	Address flag labels Loop E • Grey
516.800.936	Address flag labels Loop F • Blue
516.800.937	Address flag labels Loop G • Orange
516.800.938	Address flag labels Loop H • Red

Call Point & Ancillary Address Labels



Detectors have a special address flag for carrying the address labels - detailed in the detector section. For other devices or on detectors where zone information is also required a series of address labels are available.

Numbered 1 to 250, the address labels are available in 8 different colours to distinguish between different loops.

In addition small zone labels can be fixed to the address labels.

General Features

- Colour coded for Easy Loop Identification.
- Space for Zonal Label.
- Strong Adhesive Backing.

Product Order Codes

Zone Labels

599.047.011	Zone labels - Zones 1 - 16
599.047.012	Zone labels - Zones 17 - 32
599.047.013	Zone labels - Zones 33 - 48
599.047.014	Zone labels - Zones 49 - 64
599.047.015	Zone labels - Zones 65 - 80
599.047.016	Zone labels - Zones 81 - 100
599.047.018	Zone labels - Zones 101 - 120
599.047.019	Zone labels - Zones 121 - 140
599.047.020	Zone labels - Zones 141 - 160
599.047.021	Zone labels - Zones 161 - 180
599.047.022	Zone labels - Zones 181 - 200
599.047.023	Zone labels - Zones 201 - 220
599.047.024	Zone labels - Zones 221 - 240

Address Labels

599.047.030	Address Labels 1 - 250 Loop A - White
599.047.031	Address Labels 1 - 250 Loop B - Yellow
599.047.032	Address Labels 1 - 250 Loop C - Purple
599.047.033	Address Labels 1 - 250 Loop D - Green
599.047.034	Address Labels 1 - 250 Loop E Light Blue
599.047.035	Address Labels 1 - 250 Loop F Orange
599.047.036	Address Labels 1 - 250 Loop G Red
599.047.037	Address Labels 1 - 250 Loop H Dark Blu

Installation Accessories

Stopper



The callpoint STOPPER provides protection from malicious or accidental activation of manual callpoints. Available for flush or surface mounted callpoints the ‘STOPPER’ is also available with optional high pitch sounder which is activated when the lid is lifted.

An optional ‘Break-Seal’ fitting kit allows ‘Break-Seals’ to be used to provide extra protection.

WARNING:- Break Seals should only to be fitted by agreement with relevant fire authorities.

The STOPPER is suitable for all callpoints up to 100mm square

General Features

- Prevents accidental operation of callpoints.
- Strong polycarbonate construction.
- Optional break seal kit.

Product Order Codes

515.001.029	Standard STOPPER flush mount
515.001.030	Standard STOPPER surface mount
515.001.031	Standard STOPPER flush mount with sounder
515.001.032	Standard STOPPER surface mount with sounder
515.001.033	STOPPER BREAK SEAL KIT (Pack of 1)
515.001.034	STOPPER II SURFACE - RED
515.001.035	STOPPER II Surface mount weatherproof
515.001.036	STOPPER surface mount weatherproof
515.001.029	Standard STOPPER flush mount
515.001.030	Standard STOPPER surface mount
515.001.031	Standard STOPPER flush mount with sounder
515.001.032	Standard STOPPER surface mount with sounder
515.001.033	STOPPER BREAK SEAL KIT (Pack of 1)
515.001.034	STOPPER II SURFACE - RED
515.001.035	STOPPER II Surface mount weatherproof
515.001.036	STOPPER surface mount weatherproof

Detector Test Equipment

Testifire Smoke/Heat/CO Tester



Testifire is a 3 in 1 tool which represents the next generation of detector testing enabling smoke, heat and CO testing from one device. Latest technology stimuli production and delivery renders the product suitable for testing complex multi sensors to basic single sensor detectors.

Its advanced design allows for single, sequential or simultaneous stimuli generation. This ensures each type of detector can be functionally tested in an efficient manner.

Testifire eliminates the need for pressurised canisters by using replaceable capsules. It addresses global warming concerns associated with aerosols reducing waste and transport bulk.

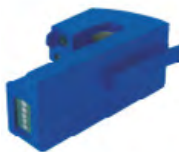
General Features

- Provides clear identification of address.
- Colour coded.
- Flag remains on base.

Product Order Codes

517.001.236

Testifire Smoke Capsule (Pk6)



6 x Replacement CO capsules for use with Testifire.

Product Order Codes

517.001.237

Testifire Smoke Capsule (Pk6)



6 x Replacement CO capsules for use with Testifire.

Product Order Codes

517.001.238

Detector Test Equipment

Spare Battery Baton



NiMH Battery Baton for use with Testfire and Solo Cordless Heat Detector Tester.

Product Order Codes

SOLO760 517.001.239

Spare Baton Charger



Fast Charger for use with Solo Battery Batons.

Product Order Codes

SOLO725 517.001.243

Storage Bag



Product Order Codes

Storage Bag 517.001.264

Testfire Smoke/Heat Tester



Includes: 1 x Testfire Smoke & Heat Detector Tester.
1 x Testfire Smoke Capsule.
2 x Solo Battery Batons.
1 x Solo Battery Charger.

Product Order Codes

Testfire Smoke/Heat tester 517.001.267

Solo Smoke Detector Tester



- Non flammable.
- Fast activation.

Product Order Codes

Solo smoke detector tester 517.001.256

Solo CO Detector Tester



- Designed for use with Solo Dispenser.
- Genuine, non-flammable CO stimulus.

Product Order Codes

Solo smoke detector tester 517.000.262

Solo330 Smoke/CO Aerosol Dispenser



- Lightweight and simple to use.
- Universal design suits wide range of detectors.
- Spring loaded solution for suspended ceilings.
- For use with Solo Smoke and CO Canisters.
- Designed for use with Solo Dispenser.

Product Order Codes

517.001.255

Detector Test Equipment

Cordless Heat Detector Tester



- Battery powered
- No cables, trailing leads or hanging wires.
 - Suits fixed temperature, rate of rise and combination detectors up to 194oF / 90 oC.
 - Lightweight and simple to use.
 - Universal design suits wide range of detectors.
 - Transparent cup for clear view of detector LED.
 - Designed for use at height, angles or low level.

Includes: 1 x Solo Heat Detector Tester
1 x Solo Battery Charger.
2 x Solo Battery Batons.

Product Order Codes

SOLO461 517.001.254

Solo Universal Removal Tool



- Universal Solo design suits wide range of detectors.
- Suitable for use at / from angles.

Product Order Codes

517.001.240

Telescopic Extension Pole



Product Order Codes

SOLO100 517.001.230

Extension Pole



A 1.13 metre Solo Extension Pole which can be used on its own or fitted to the Solo.

Product Order Codes

SOLO101 517.001.226

Adaptor Tube



Adaptor for Solo Accesss Poles to allow fitting 800RT Detector Removal Tool.

Product Order Codes

SOLO704 517.001.224

Detector Removal Tool



Compatible with FC400 and FC460 Series detectors.

Product Order Codes

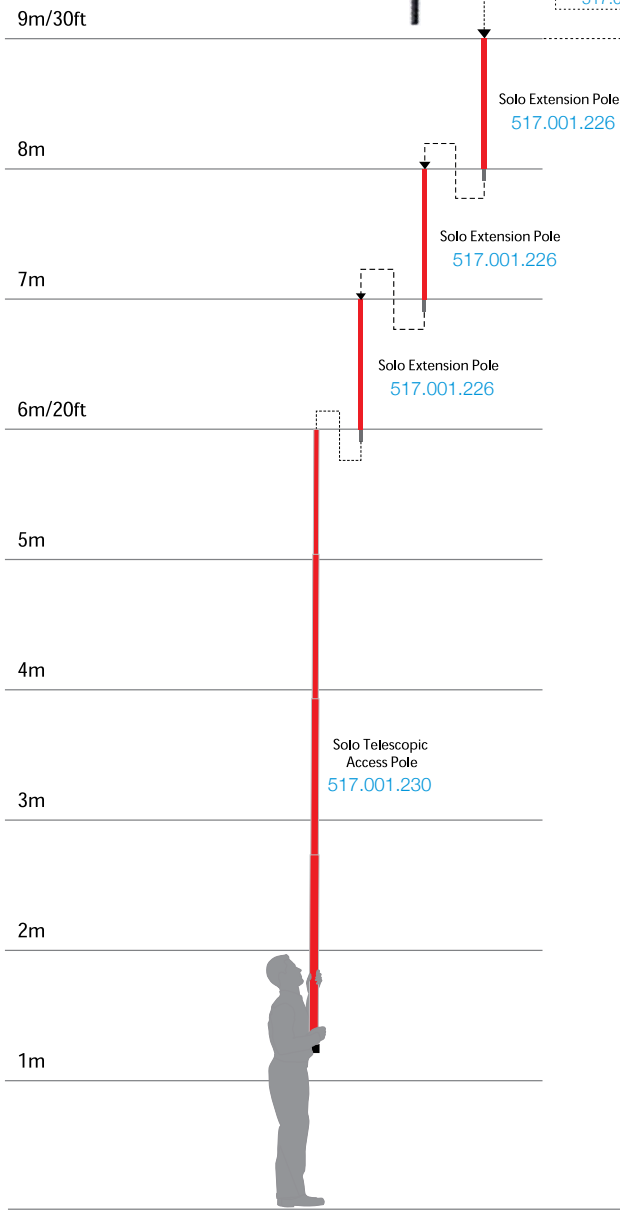
800RT 516.800.917

Detector Test Equipment



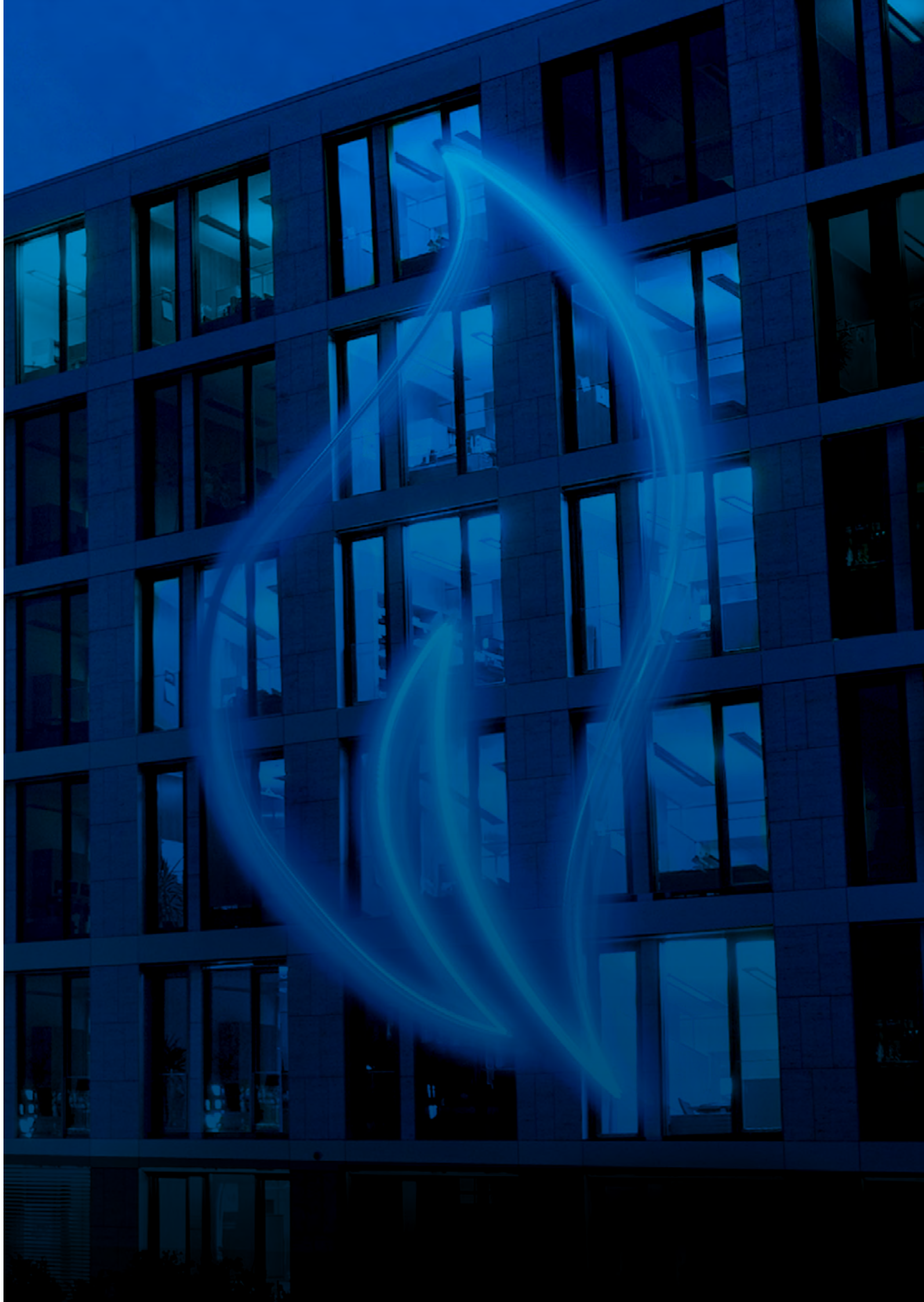
Solo Battery Baton 517.001.239
For use with:
Testfire Smoke, Heat & CO Detector Test Kit 517.001.236
Testfire Smoke & Heat Detector Test Kit 517.001.267
Cordless Heat Detector Test Kit 2501100

Adaptor tube B 517.001.224



Solo Poles Access Height

Part No.	Access Height (approx. max.)
517.001.230	6m (20ft)
517.001.230 + 517.001.226 (x 1)	7m (23ft)
517.001.230 + 517.001.226 (x 2)	8m (26.25ft)
517.001.230 + 517.001.226 (x 3)	9m (30ft)



For more information about
FireClass fire detection technology visit:
www.fireclass.net
or contact us at
FireClasssales@tycoint.com
FireClass locations at:



Tyco Fire Protection Products
PO Box 61355
Block D, Floor 3
Office Park Building #56,
Dubai Internet City,
Dubai,
United Arab Emirates

Tel: +971 (0) 488 386 89
Fax: +971 (0) 488 386 74

Tyco Yangin Korunum Sistemleri
Anonim Sirketi
Ehibeyt Mahallesi, Aykon Plaza
1242, Cadde, Nox 36 Kat 2/10
06520 Balgat - Ankara
Turkey

Tel: +90 (0) 312 473 7011
Fax: +971 (0) 312 473 7392

Tyco Fire Protection Products
Tyco Park
Grimshaw Lane
Newton Heath, Manchester
M40 2WL
United Kingdom

Tel: +44 (0) 161 259 4000
Fax: +44 (0) 161 875 0491

Tyco Fire Protection Products
Unit 3, Thandanani Office Park
Halfway Gardens
Midrand
3610
South Africa

Tel: +27 (0) 110 269 476

Tyco Fire Protection Products
c/ Isaac Peral 3
28823
Coslada (Madrid)
Spain

Tel : +34 (0) 913 807 460

Tyco Fire Protection Products
Via Gabbiano 22
Zona Industriale S. Scolastica
64013 Corropoli (TE)
Italy

FireClassSalesIT@tycoint.com

Tyco Fire Protection Products
Rua Robert Bosch, 568
Barra Funda
São Paulo / SP
01141-010
Brazil

Tel: +55 (0) 112 192 9100
Email: FireClassSalesLATAM@tycoint.com

Tyco Fire Protection Products
59-61. Etele út
1119
Budapest
Hungary

Tel: +36 (1) 481 138 3

Tyco Fire Protection Products
Kopersteden 1
P.O. Box 198, 7500 AD
Enschede
The Netherlands

Tel : +31 (0) 534 284 444
Fax : +31 (0) 534 283 377
verkoopNL@tyco-bspd.com

Tyco Fire Protection Products
1002, Wing, c'/ 10th Floor
Godrej Coliseum
Sion, Mumbai - 400 022
India

Tel : +91 (0) 226 628 6628
Fax : +91 (0) 226 628 6650

Tyco Fire Protection Products
2 Serangoon North Avenue 5
07-01
Singapore 554911
Tel: +65 6577 4360
Fax: +65 6481 8791
Email: info.apac@tycofp.com

The images shown in this catalogue are merely indicative and FireClass reserves the right to modify at any time the characteristics of the products here represented.

Some products are not available in all countries. Contact your local distributor for details.

FireClass and any other product names listed above are marks and/or registered marks.

Unauthorized use is strictly prohibited.

Copyright © 2015 Tyco Fire Products LP. All rights reserved.

tyco
Fire Protection Products